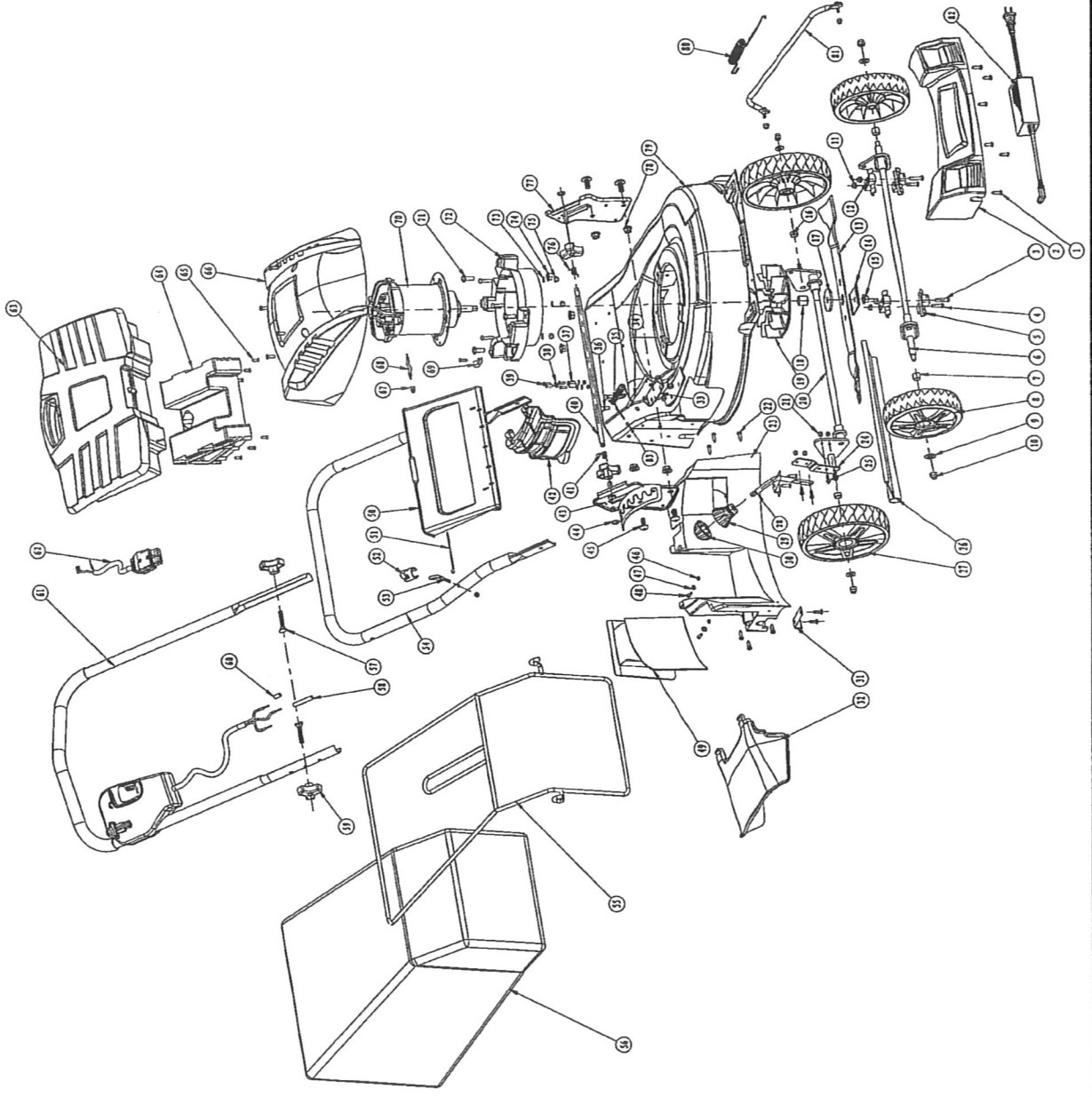


# BAT 50

## PARTS



## Owner's Manual

### PARTS LIST

APA Part No.	Part No.	Description	QTY
PM207DC-01-QQ	8220801	Tapping Screw St 4.8×18-f	26
PM207DC-02-QQ	8410201	Front Cover	1
PM207DC-03-QQ	8228701	Cap Screw M6 × 30	2
PM207DC-04-QQ	8228801	Cap Screw M6 × 25	5
PM207DC-05-QQ	8410301	Front Wheel Lower Board	2
PM207DC-06-QQ	8330101	Front Axle Assembly	1
PM207DC-07-QQ	8321002	Front Axle Sleeve	2
PM207DC-08-QQ	8410701	7-inch Wheel Components	2
PM207DC-09-QQ	8247801	Wash Φ 8	7
PM207DC-10-QQ	8220502	Hexagon Lock Nut M8	4
PM207DC-11-QQ	8230201	Hexagon Lock Nut M6	11
PM207DC-12-QQ	8410401	Front Wheel Upper Board	2
PM207DC-13-QQ	8331501	20-inch Blade	1
PM207DC-14-QQ	8331901	Blade Baffle	1
PM207DC-15-QQ	8220102	Lock Shaft Nut	1
PM207DC-16-QQ	8321101	Rear Axle Cover	2
PM207DC-17-QQ	8330401	Fan Gasket	1
PM207DC-18-QQ	8320102	Blade Bushing	1
PM207DC-19-QQ	8412701	Fan	1
PM207DC-20-QQ	8330301	Rear Axle Assembly	1
PM207DC-21-QQ	8228401	Hexagon Lock Nut M5	5
PM207DC-22-QQ	8220701	Tapping Screw St5 × 20-c	2
PM207DC-23-QQ	8411501	Rear Discharge Door	1
PM207DC-24-QQ	8331601	Spring Board	1
PM207DC-25-QQ	8221501	Tapping Screw M5 × 15	4
PM207DC-26-QQ	8430201	Rear Shield	1
PM207DC-27-QQ	8410801	8-inch Wheel Components	2
PM207DC-28-QQ	8321301	Height Adjustment Shaft	1
PM207DC-29-QQ	8412301	Height Adjustment Lower Handle	1
PM207DC-30-QQ	8412201	Height Adjustment Upper Handle	1
PM207DC-31-QQ	8330501	Rear Platen	2
PM207DC-32-QQ	8411301	Side-discharge Deflector	1
PM207DC-33-QQ	8331801	Side-discharge Bracket	1
PM207DC-34-QQ	8320201	Side-discharge-pin	1
PM207DC-35-QQ	8320801	Side Compression Spring	1
PM207DC-36-QQ	8220601	Bolt M6 × 15	2
PM207DC-37-QQ	8411901	Cord Guide	1
PM207DC-38-QQ	8221201	Tapping Screw St4 ×18-c	2
PM207DC-39-QQ	8412001	Cord Clip	1
PM207DC-40-QQ	8320401	Shaft For Rear Cover	1
PM207DC-41-QQ	8322901	Back Cover Spring Right	1
PM207DC-42-QQ	8411401	Side-discharge Cover	1

### PARTS LIST

APA Part No.	Part No.	Description	QTY
PM207DC-43-QQ	8330801	Right Height Adjustment Board Assy	1
PM207DC-44-QQ	8247501	Open Circlip 7	2
PM207DC-45-QQ	8220501	Bolt M10x20	4
PM207DC-46-QQ	8221001	Hex Lock Nut M4	2
PM207DC-47-QQ	8247701	Wash Ø 4	3
PM207DC-48-QQ	8221101	Cap Screw M4 x 14	2
PM207DC-49-QQ	8411201	Mulch Plug	1
PM207DC-50-QQ	8411101	Rear Cover	1
PM207DC-51-QQ	8413301	Nylon Cable Ties 4 x 100	1
PM207DC-52-QQ	8412501	Retaining Hook For Cord	2
PM207DC-53-QQ	8330201	Threaded Ring	1
PM207DC-54-QQ	8320701	Lower Handle	1
PM207DC-55-QQ	8321401	Bracket For Grass Catcher	1
PM207DC-56-QQ	8440201	Blade Baffle	1
PM207DC-57-QQ	8220202	Grass Collection Bags	2
PM207DC-58-QQ	8490101	Ø 8 Shrink Tube	1
PM207DC-59-QQ	8410501	Knob	4
PM207DC-60-QQ	8650701	Copper Wiring Sets Ø 8	1
PM207DC-61-QQ	8110101	Dc Upper Handle Assy	1
PM207DC-62-QQ	8110401	Plug Assy	1
PM207DC-63-QQ	8110301	Battery Assy	1
PM207DC-64-QQ	8412101	Battery Bracket	1
PM207DC-65-QQ	8228001	Tapping Screw St 4.2 x 16-c	6
PM207DC-66-QQ	8410101	Motor Housing	1
PM207DC-67-QQ	8650801	End Terminal	1
PM207DC-68-QQ	8641201	Inner Wire 12 Awg W	1
PM207DC-69-QQ	8412801	R-shaped Line Card	1
PM207DC-70-QQ	8130101	Dc Motor	1
PM207DC-71-QQ	8220302	Hexagon Bolt M8 x 20	3
PM207DC-72-QQ	8410601	Motor Bracket	1
PM207DC-73-QQ	8240102	Wash Ø 6	5
PM207DC-74-QQ	8227502	Flange Nut M8	3
PM207DC-75-QQ	8230201	Hexagon Lock Nut M6	3
PM207DC-76-QQ	8321001	Left Back Cover Spring	1
PM207DC-77-QQ	8330601	Shaft For Rear Cover	1
PM207DC-78-QQ	8238301	Flange Nut M10	4
PM207DC-79-QQ	8331201	Deck Components	1
PM207DC-80-QQ	8320901	Tension Springs	1
PM207DC-81-QQ	8330901	Linkage Components	1
PM207DC-82-QQ	8120101	Charger Components	1
PM207DC-83-QQ	8420201	Rubber Sleeve Spring	3