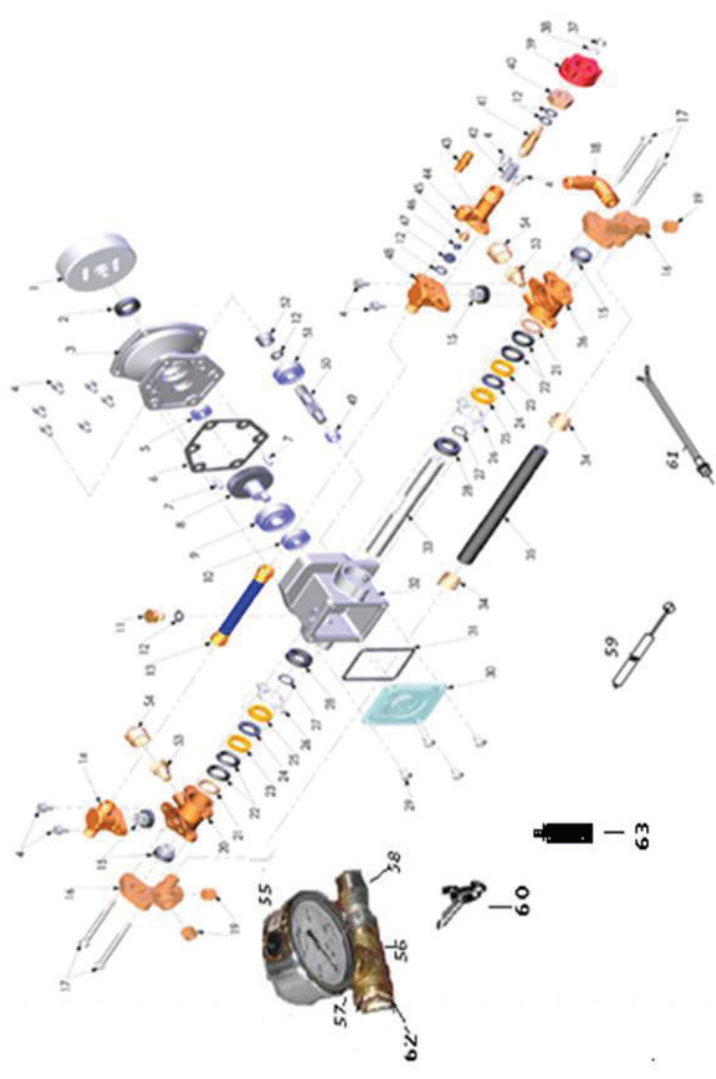
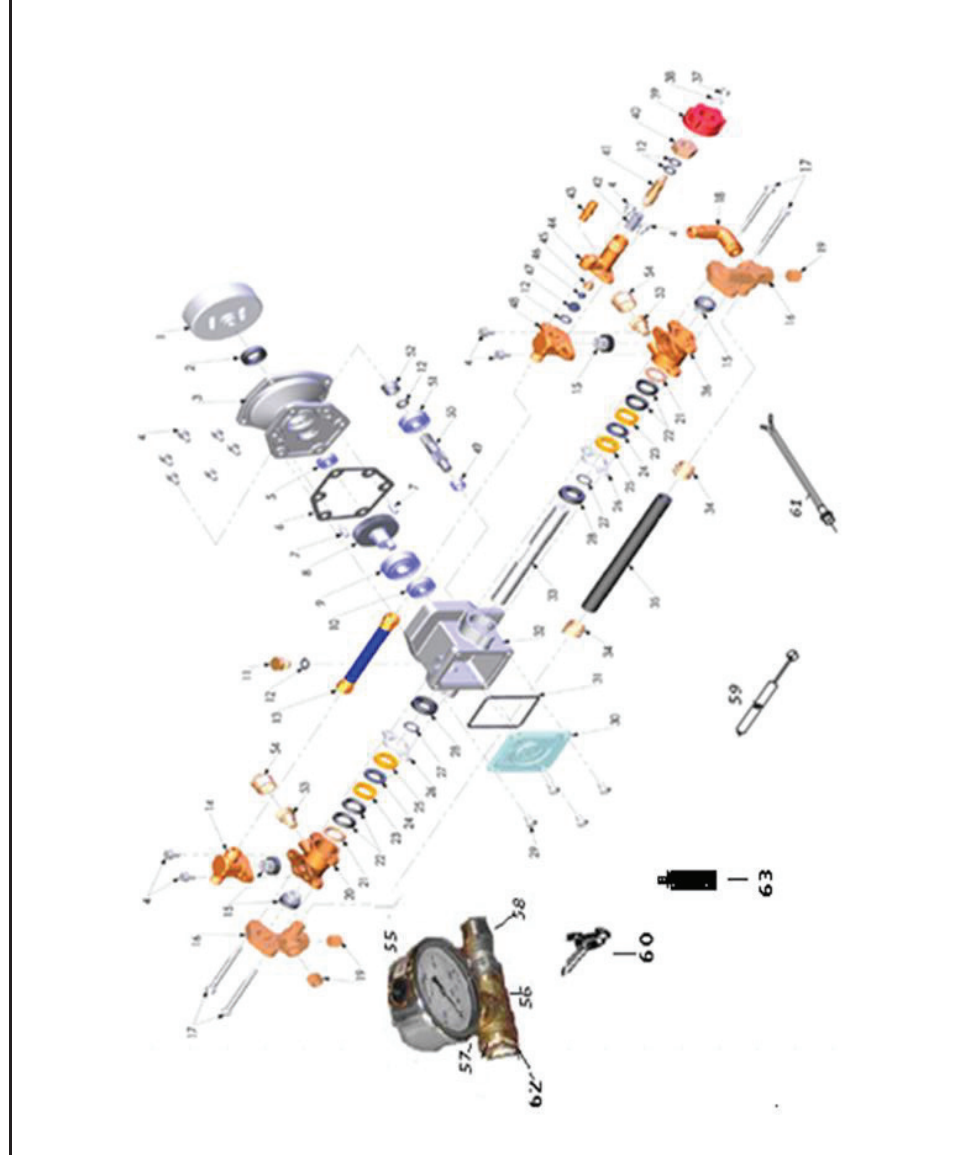


# DESPIECE : BOMBA MORI 2P 35 bar

|    | Elemento/Pieza        | Can | Referencia     | Desde<br>Nº Serie | Hasta<br>Nº Serie |
|----|-----------------------|-----|----------------|-------------------|-------------------|
| 1  | Campana embrague 54   | 1   | RHI07FTC1678   |                   |                   |
| 2  | Reten                 | 1   | RHI26TC17287   |                   |                   |
| 3  | Carcasa embrague      | 1   | RHI01FTC16A88  |                   |                   |
| 4  | Tornillos             | 12  | RHI506100616N2 |                   |                   |
| 5  | Rodamiento            | 1   | RHI54608       |                   |                   |
| 6  | Junta                 | 1   | RHIFTC1601     |                   |                   |
| 7  | Pasador               | 2   | RHI550616      |                   |                   |
| 8  | Engranaje             | 1   | RHI42FTC16M48  |                   |                   |
| 9  | Rodamiento            | 1   | RHI546203      |                   |                   |
| 10 | Rodamiento            | 1   | RHI546200      |                   |                   |
| 11 | Tornillo              | 1   | RHI5119GNL     |                   |                   |
| 12 | Junta tórica          | 5   | RHI27088019    |                   |                   |
| 13 | Manguera alta presión | 1   | RHI00000000    |                   |                   |
| 14 | Cámara salida         | 1   | RHI15FTC1602   |                   |                   |
| 15 | Conjunto válvula      | 4   | RHI29FTC16V4   |                   |                   |
| 16 | Cámara aspiración     | 2   | RHI17FTC1601   |                   |                   |
| 17 | Tornillos             | 4   | RHI5060670N2   |                   |                   |
| 18 | Codo aspiración       | 1   | RHI17FTC1602   |                   |                   |
| 19 | Tuerca                | 3   | RHI17FTC1604   |                   |                   |
| 20 | Cilindro              | 1   | RHI15FTC1601L  |                   |                   |
| 21 | Junta                 | 2   | RHI16FTC1603   |                   |                   |
| 22 | Junta V               | 4   | RHI26V16260601 |                   |                   |
| 23 | Asiento grasa         | 2   | RHI16FTC1604   |                   |                   |



# DESPIECE : BOMBA MORI 2P 35 bar



|    | Elemento/Pieza          | Can | Referencia     | Desde N° Serie | Hasta N° Serie |
|----|-------------------------|-----|----------------|----------------|----------------|
| 24 | Junta grasa             | 2   | RHI26T16250401 |                |                |
| 25 | Aro de ajuste           | 2   | RHI16FTC1605   |                |                |
| 26 | Asiento fijo            | 2   | RHI43FTC16Y01  |                |                |
| 27 | Junta tórica            | 2   | RHI27148024    |                |                |
| 28 | Reten                   | 2   | RHI26TC16287   |                |                |
| 29 | Tornillo tapa           | 4   | RHI50B100612N  |                |                |
| 30 | Tapa transparente       | 1   | RHI20FTC16P07  |                |                |
| 31 | Junta tórica            | 1   | RHI27574031    |                |                |
| 32 | Carter bomba            | 1   | RHI01FTC16B01  |                |                |
| 33 | Eje bomba               | 1   | RHI401616630   |                |                |
| 34 | Clips                   | 2   | RHI53018C1     |                |                |
| 35 | Tubo aspiración         | 1   | RHI0000001     |                |                |
| 36 | Cilindro                | 1   | RHI15FTC1601R  |                |                |
| 37 | Tuerca nylon            | 1   | RHI0000002     |                |                |
| 38 | Arandela                | 1   | RHI0000003     |                |                |
| 39 | Pomo ajuste presión     | 1   | RHI20FTC16P06  |                |                |
| 40 | Tuerca                  | 1   | RHI51FTC16P05  |                |                |
| 41 | Tornillo ajuste presión | 1   | RHI42FTC16P03  |                |                |
| 42 | Muelle                  | 1   | RHI41018210S2  |                |                |
| 43 | Conector                | 1   | RHI17FTC1603   |                |                |
| 44 | Cuerpo válvula ajuste   | 1   | RHI15FTC1604   |                |                |
| 45 | Soporte válvula         | 1   | RHI16FTC16P01  |                |                |
| 46 | Bola                    | 1   | RHI5608001     |                |                |

# DESPIECE : BOMBA MORI 2P 35 bar

| Elemento/Pieza        | Can | Referencia    | Desde<br>Nº Serie | Hasta<br>Nº Serie |
|-----------------------|-----|---------------|-------------------|-------------------|
| 47 Asiento válvula    | 1   | RHI16FTC16P02 |                   |                   |
| 48 Cámara salida      | 1   | RHI15FTC1603  |                   |                   |
| 49 Rodamiento         | 1   | RHI54HK1010   |                   |                   |
| 50 Eje                | 1   | RHI42FTC16M13 |                   |                   |
| 51 Rodamiento         | 1   | RHI546201     |                   |                   |
| 52 Casquillo          | 1   | RHI55121710   |                   |                   |
| 53 Cuerpo engrasador  | 2   | RHI671G2801   |                   |                   |
| 54 Tapa engrasador    | 2   | RHI671G2802   |                   |                   |
| 55 Manómetro 0-100    | 1   | R21800080010  |                   |                   |
| 56 Te porta manómetro | 1   | R2200CA500004 |                   |                   |
| 57 Reducción 1/2-1/4  | 1   | R2200CA500005 |                   |                   |
| 58 Válvula 1/2"       | 1   | RHICA500006   |                   |                   |
| 59 Cable acelerador   | 1   | RSTA1CT70032  |                   |                   |
| 60 Palanca acelerador | 1   | RSTA1AG00240  |                   |                   |
| 61 Interruptor paro   | 1   | REUREG2303052 |                   |                   |
| 62 Reducción especial | 1   | RHIREduc1-2   |                   |                   |
| 63 Pie de apoyo       | 1   | R2200CA600006 |                   |                   |
| Bomba completa        | 1   | RHIFTC16100   |                   |                   |

