

Fig. 1 ENGINE GROUP

EB-800-E

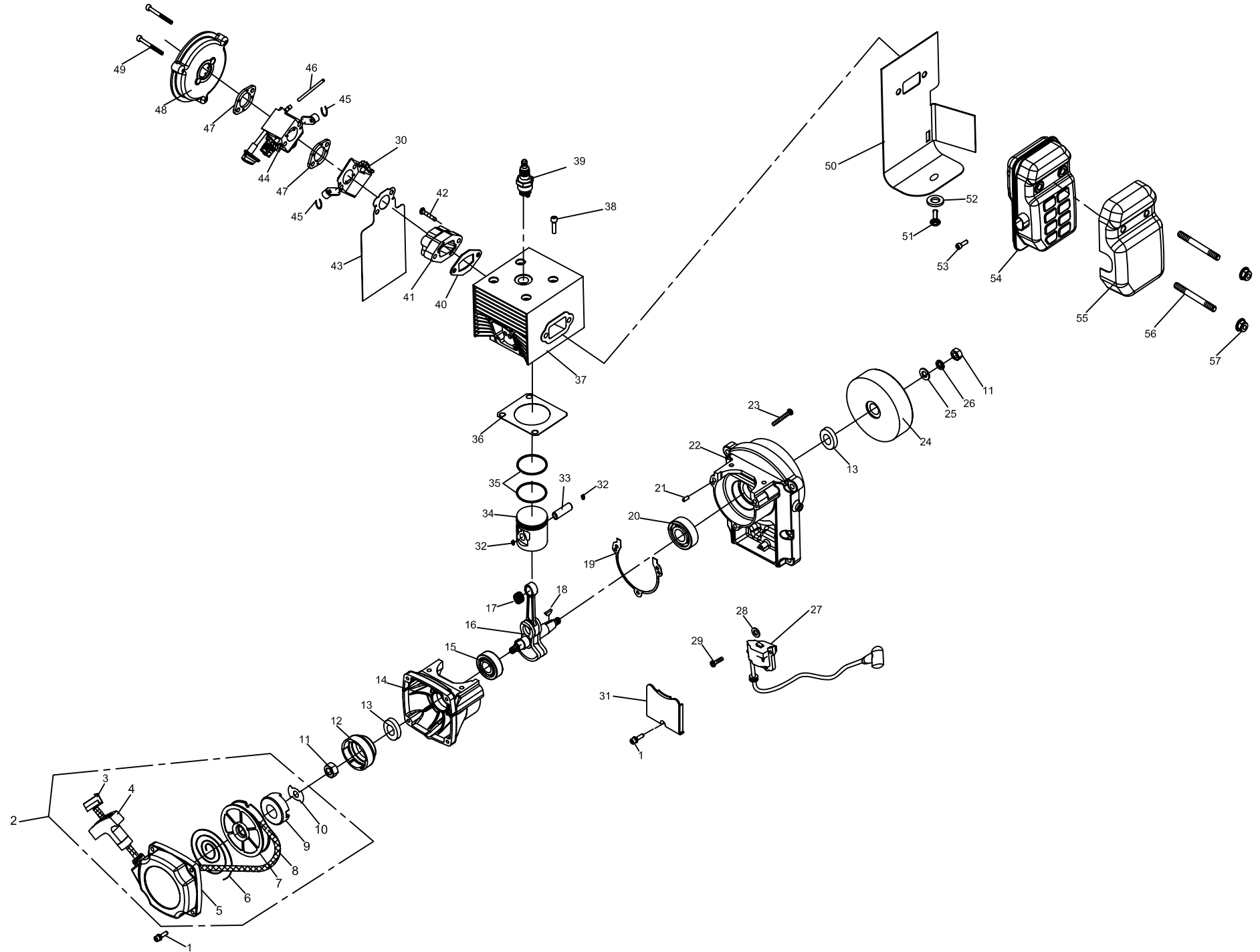


Fig. 1 ENGINE GROUP

NO.	PART NUMBER	DISCREPTION	QTY.	NO.	PART NUMBER	DISCREPTION	QTY.	NO.	PART NUMBER	DISCREPTION	QTY.
1	GB70.1+GB93+GB97	SCREW M5 × 16	5	28	P40-5	WASHER	2	55	EB-800-E. 1. 8	SHIELD	1
2	EB-800-E. 1. 7	STARTER ASSY	1	29	GB9074. 13	SCREW M4 × 20	2	56	1E40F-5-13C	BOLT	2
3	1E40FP-3Z. 4-10	. KNOB CAP	1	30	EB-800-E. 1. 10	BLOCK	1	57	GB6187. 1	NUT M8	2
4	1E40FP-3Z. 4-2	. KNOB	1	31	EB-800-E. 1-3	SHIELD	1				
5	EB-800-E. 1. 7-1	. CASE	1	32	1E58FL. 6-5	RING	2				
6	1E40FP-3Z. 4-7	. SPRING	1	33	6MF-30. 1. 4-2	PISTON PIN	1				
7	EB-800-E. 1. 7-3	. REEL	1	34	EB-800-E. 1. 5-1	PISTON	1				
8	3. 8 × 800	. ROPE	1	35	1E53FP. 4-2	PISTON RING	2				
9	1E46FP-3. 3-1	. WHEEL	1	36	EB-800-E. 1-7	GASKET	1				
10	EB-800-E. 1. 7-2	. GUIDE SLICE	1	37	EB-800-E. 1. 3	CYLINDER ASSY	1				
11	GB/T 6171	NUT M10 × 1	2	38	GB70	SCREW M6 × 20	4				
12	EB-800-E. 1. 5	START REEL	1	39	BPMR7A	SPARK PLUG	1				
13	1E40FP-3Z-11	SEAL	2	40	EB-800-E. 1-2	GASKET	1				
14	1E54FP. 2-2	BACK CANKCASE	1	41	EB-800-E. 1. 2	INSULATOR	1				
15	GB/T 276	BEARING 6202/P6	1	42	GB70.1+GB93+GB97	SCREW M5 × 25	2				
16	EB-800-E. 1. 5. 1	CRANKSHAFT	1	43	EB-800-E. 1-1A	GASKET	1				
17	6MF-30. 1. 4-3	BEARING	1	44	EB-800-E. 1. 1	CARBURETOR	1				
18	GB 1099	KEY 3 × 5 × 13	1	45	GB 894	RING 8	2				
19	1E54FP. 2-1	GASKET	1	46	CG420. 1. 3. 2-2	FULE TUBE	100mm				
20	GB/T 276	BEARING 6203	1	47	6MF-30. 1-6	GASKET	2				
21	GB119	PIN 4h8 × 10	2	48	EB-800-E. 2-7	INSIDE COVER	1				
22	EB-800-E. 1. 4-1	FRONT CANKCASE	1	49	GB70.1+GB93+GB97	SCREW M5 × 80	2				
23	GB70	SCREW M5 × 35	3	50	EB-800-E. 1-4A	GASKET	1				
24	1E46FP. 1. 1-	FLYWHEEL	1	51	GB70	SCREW M5 × 8	1				
25	GB97	WASHER 10	1	52	GB96	WASHER 5	1				
26	GB93	WASHER 10	1	53	GB70.1+GB93+GB97	SCREW M5 × 12	1				
27	EB-800-E. 1. 9	MAGNETO	1	54	EB-800-E. 1. 6	MUFFLER	1				

Fig. 2 BLOWER GROUP

EB-800-E

NO.	PART NUMBER	DISCREPTION	QTY.	NO.	PART NUMBER	DISCREPTION	QTY.	NO.	PART NUMBER	DISCREPTION	QTY.
1	3WF-20.9-2	SCREW M5 × 16	21	28	XSS46-2.2-5	SCREW M5 × 20	5	55	EB-800-E.3.1	.FULE TANK	1
2	EB-800-E-4	ENGINE COVER	1	29	EB-800-E.2.1-2	CLEANER OUTSIDE COVER	1	56	P40.12.2-3A	. FILTER	1
3	3WF-20.9-1	SCREW M5 × 10	3	30	EB-650.5.3	SCREW	2	57	CG420.1.3.2-2	. FULE TUBE	250mm
4	EB-800-E-8	BACKET	1	31	EB-800-E.2.1-1	CLEANER OUTSIDE COVER	1	58	EB-415.4.2-4	. FULE TUBE	175mm
5	3WF-20A-1	BACKET	1	32	JB8870	CLIP 40-60	1	59	EB-415.4.2-2	. VITTA	1
6	GB70.1+GB93+GB848	SCREW M6 × 25	6	33	EB-800-E.2-5	PIPE	1	60	EB-800-E-CZHZZ	LEVER SET	1
7	EB-650.6	SUPPORT	2	34	JB8870	CLIP 46-70	1	61	EB-800-E-7	. SHIELD	1
8	GB/T 96.1	WASHER 5	3	35	EB-800-E.2-6	OUTSIDE COVER	1	62	EB-800-E.6	. CABLE	1
9	GB 6177	NUT M5	3	36	EB-800-E.2-8	BAFFLE	1	63	3WF-16.3.2-1	. TUBE	1
10	3WF-3-2	NUT	4	37	GB/T 845	SCREW ST4.8 × 9.5	2	64	GB/T 846	. SCREW ST2.9 × 13	1
11	EB-800-E.5.2	VOLUTE CASE	1	38	EB-800-E.2-9	GASKET	1	65	BL750.3-9	. PUSH BUTTION	1
12	EB-800-E.5.3	IMPELLER	1	39	EB-800-E-3	PROTECT NET	1	66	BL750.3-7	. SPRING	1
13	GB70.1+GB93+GB97	SCREW M5 × 35-10.9	4	40	3WF-2.6B-2	CLIP	16	67	CG330B-3E.2.1.2	. LEFT MANIPULATOR	1
14	EB-800-E.5.1	VOLUTE COVER	1	41	EB-800-E-2	FRAME	1	68	BL750.3-8	. PIN	1
15	EB-800-E.5-2	ELBOW	1	42	GB70.1+GB93+GB848	SCREW M6 × 16	2	69	BL750.3-2	. SPRING	1
16	GB 818	SCREW M5 × 70	2	43	EB-800-E-1	PAD	1	70	BL750.3-3	. LEVER	1
17	GB/T6170	NUT M5	2	44	EB-650-10	CLIP	2	71	BL750.3-4	. LEVER, throttle	1
18	EB-800-E.5-1	LEADING WIND COVER	1	45	EB-650.10-CE	BAND ASSY	1	72	BL750.3-1	. LONG SPRING	1
19	3WF-20.9-1	SCREW M5 × 10	3	46	EBV260-3E.1.9.2A	JOINT	1	73	CG330B-3E.2.1-1	. RIGHT MANIPULATOR	1
20	EB-650.8	DAMPER	1	47	EB-800-E.3	FULE TANK ASSY	1	74	GB/T 845	. SCREW ST2.9 × 18	3
21	GB9074.4	SCREW M5 × 14	2	48	3WF-14A.2.1	. CAP ASSY	1	75	GB/T 70.1	. SCREW M5 × 30	1
22	EB-650.9	PROTECTION	1	49	3WF-14A.2.1-1	.. CAP	1	76	GB/T 889	. NUT M5	1
23	EB-800-E.2.2	INTSIDE COVER	1	50	CG420.1.3.1	.. WASHER	1	77	EB-800-E.4.2-1	HANDLE	1
24	GB70.1+GB93+GB97	SCREW M6 × 25	4	51	EB-415.4.1.1-1	.. HOLDER	1	78	GB/T 62	NUT M6	1
25	EB-800-E.2-3	PAPER FLITEE	1	52	1E32FL.6.2-2	.. LID	1	79	GB/T 97	WASHER 6	1
26	EB-800-E.2-2	FILTER BACKET	1	53	1E32FL.6.2-3	.. LID	1	80	GB 5783	BOLT M6 × 45	1
27	EB-800-E.2-1	FILTER	1	54	1E32FL.6.2-4	.. STOPPER	1	81	JB8870	CLAMP 90-110	1

