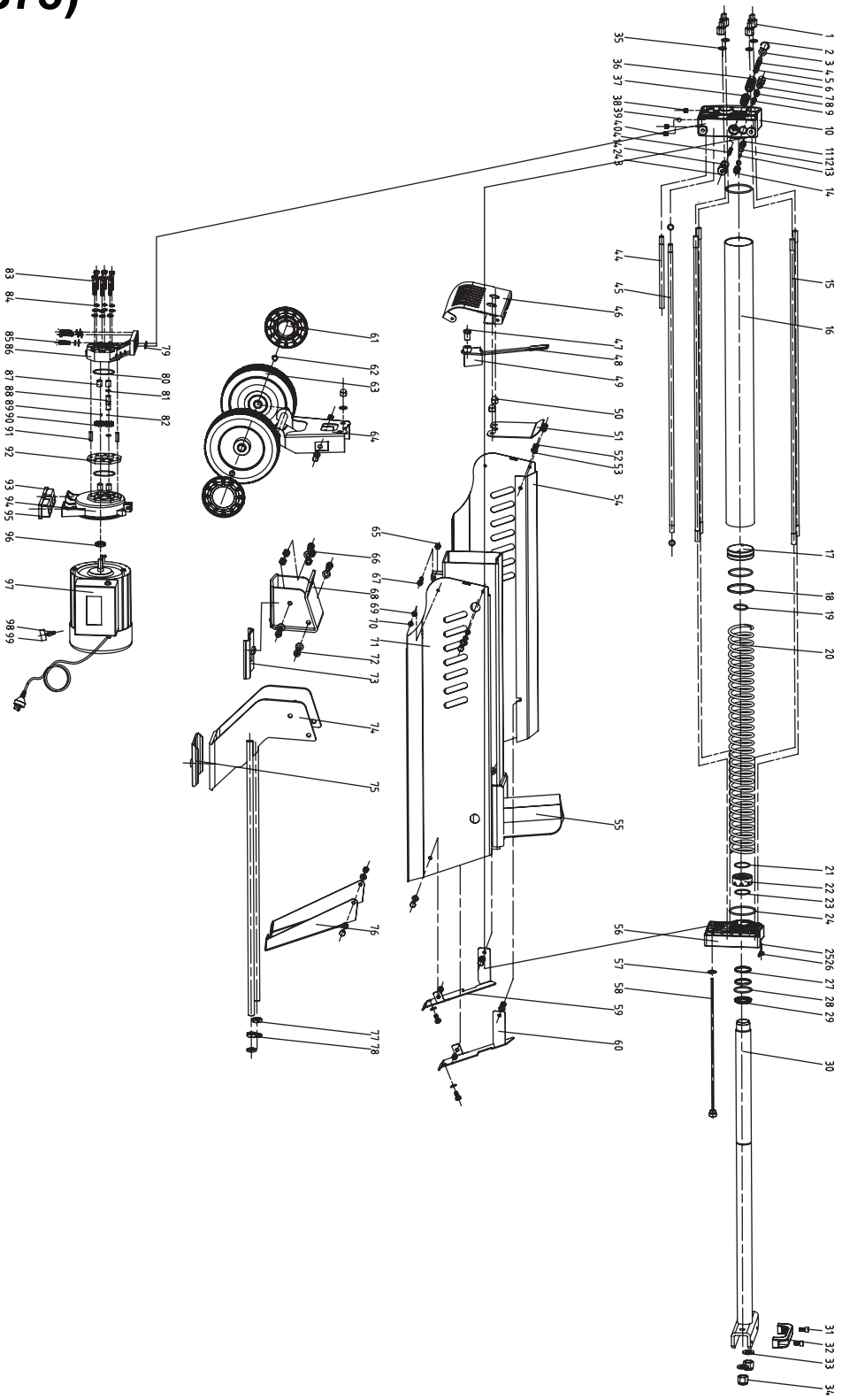


HL7T520 (LS75)

PARTS SCHEMATIC



Exploded Diagram

| SN | Description | Q'ty |
|----|------------------------------------|------|
| 1 | Nut | 4 |
| 2 | Snap Washer | 1 |
| 3 | Washer | 6 |
| 4 | Valve Rod | 1 |
| 5 | O-Ring | 1 |
| 6 | Safety Valve Spring basis | 1 |
| 7 | O-Ring | 4 |
| 8 | Safety Valve Spring | 1 |
| 9 | Safety Valve Core | 1 |
| 10 | Cylinder Cover - Left | 1 |
| 11 | Valve Sleeve | 1 |
| 12 | O-Ring | 2 |
| 13 | Safety Valve Core Adjusting Spring | 1 |
| 14 | Adjusting Spring Basis | 1 |
| 15 | Stud | 4 |
| 16 | Cylinder | 1 |
| 17 | Piston | 1 |
| 18 | Piston Ring | 1 |
| 19 | O-Ring | 1 |
| 20 | Restoring Spring | 1 |
| 21 | Circlip | 1 |
| 22 | Snap Washer | 1 |
| 23 | O-ring | 1 |
| 24 | O-ring | 2 |
| 25 | O-ring | 1 |
| 26 | Bleed Screw | 1 |
| 27 | Wear-resisting Belt | 1 |
| 28 | O-Ring | 1 |
| 29 | Piston Seal | 1 |
| 30 | Piston Rod Weldment | 1 |
| 31 | Hex. Bolt | 2 |
| 32 | Moving Handle | 1 |
| 33 | Washer | 2 |
| 34 | Nut | 2 |
| 35 | Copper Washer | 4 |
| 36 | Valve Sleeve | 1 |
| 37 | O-Ring | 4 |
| 38 | Screw | 2 |
| 39 | Steel Ball | 1 |
| 40 | Cancel | |
| 41 | Valve Rod Restoring Spring | 1 |
| 42 | O-Ring | 1 |
| 43 | Valve Base | 1 |
| 44 | Intake Hose | 1 |
| 45 | Connection Hose | 1 |

| SN | Description | Q'ty |
|----|------------------------|------|
| 46 | Cylinder Cover Guard | 1 |
| 47 | Lever Nut | 1 |
| 48 | Lever Head | 1 |
| 49 | Lever | 1 |
| 50 | Carriage Nut | 3 |
| 51 | Seperating Plate | 1 |
| 52 | Bolt | 12 |
| 53 | Washer | 21 |
| 54 | Body Cover - Right | 1 |
| 55 | Tube Frame | 1 |
| 56 | Cylinder Cover - Right | 1 |
| 57 | Dipstick Washer | 1 |
| 58 | Dipstick | 1 |
| 59 | Guard Cover - Right | 1 |
| 60 | Guard Cover - Left | 1 |
| 61 | Wheel Cover | 2 |
| 62 | Wheel Shaft Snap Ring | 2 |
| 63 | Wheel | 2 |
| 64 | Wheel Shaft Frame | 1 |
| 65 | Nut | 5 |
| 66 | Nut | 4 |
| 67 | Hex. Bolt | 1 |
| 68 | Log Pusher | 1 |
| 69 | Washer | 4 |
| 70 | Cross Headed Screw | 4 |
| 71 | Body Cover - Left | 1 |
| 72 | Hex. Bolt | 4 |
| 73 | Plastic Insert - Upper | 1 |
| 74 | Drawing Weldment | 1 |
| 75 | Plastic Insert - Lower | 1 |
| 76 | Support Leg | 1 |
| 77 | Thin Nut | 2 |
| 78 | Spring Washer | 2 |
| 79 | O-Ring | 2 |
| 80 | O-Ring | 2 |
| 81 | Gear Shaft Snap Washer | 2 |
| 82 | Steel Ball | 1 |
| 83 | Bolt | 6 |
| 84 | Spring Washer | 9 |
| 85 | Bolt | 3 |
| 86 | Pump Cover | 1 |
| 87 | Sleeve Bearing | 4 |
| 88 | Gear Shaft | 1 |
| 89 | Pin | 1 |
| 90 | Gear | 2 |

| SN | Description | Q'ty |
|-----------|----------------------------|-------------|
| 91 | Pin | 2 |
| 92 | Gear Housing Plate | 1 |
| 93 | Motor Support Shoe - Right | 1 |
| 94 | Motor Cover | 1 |
| 95 | Motor Support Shoe - Left | 1 |
| 96 | Seal | 1 |
| 97 | Motor Assembly | 1 |
| 98 | Nut | 1 |
| 99 | Screw | 1 |

**Para saber que código es el nuestro hay que :
(LSxx)+Fig+S.N.
ejemplo:
LS75FIG1**