



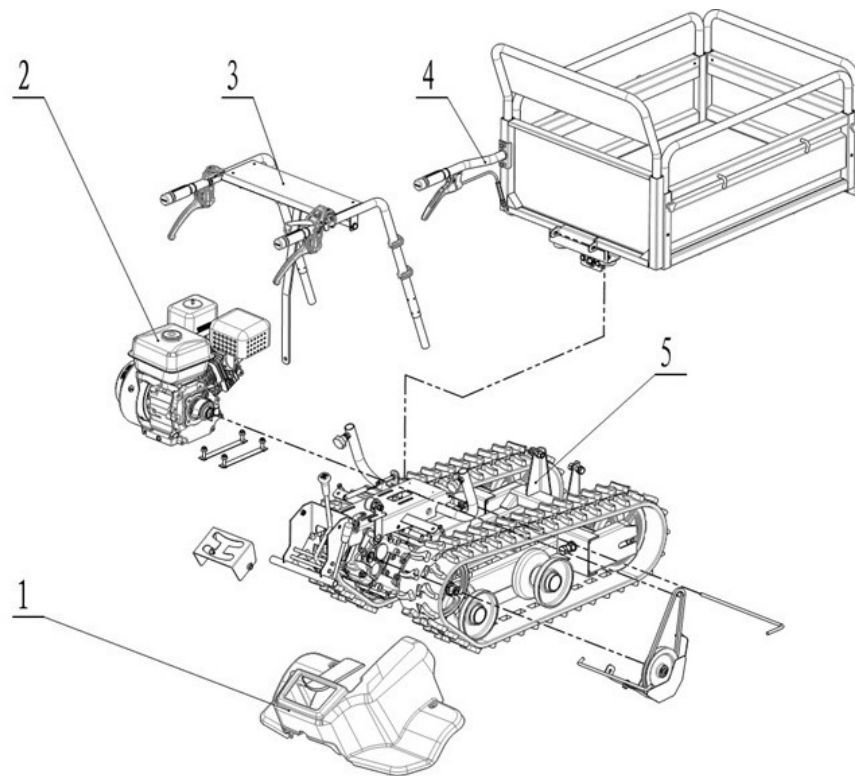
MD-320SH

04/07/2018

# CONTENTS

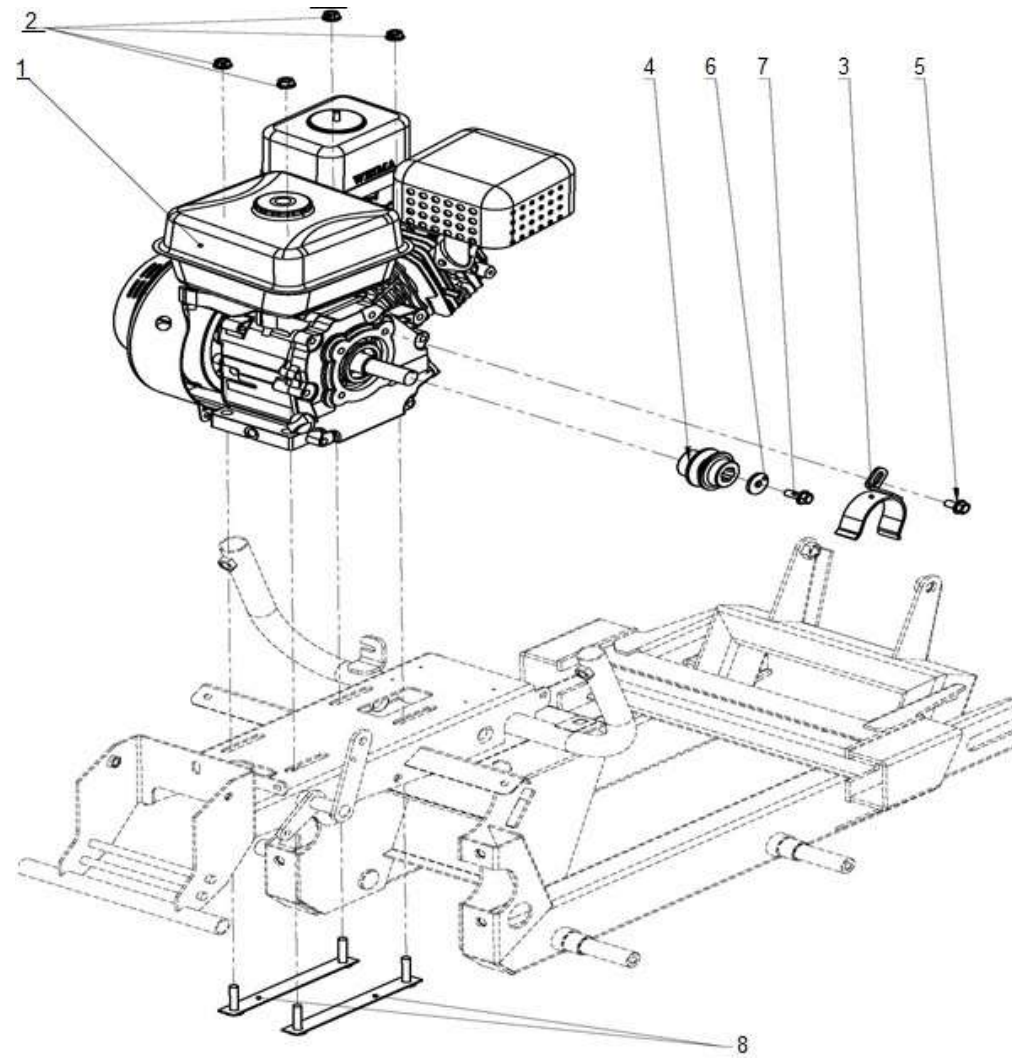
	page
1. Machine Parts.....	3
2. Engine .....	4~5
3. Handle bar comp.....	6~7
4. Chassis and gear box comp - 1.....	8~10
5. Chassis and gear box comp - 2.....	11~14
6. Chassis and gear box comp - 3.....	15~18
7. Container comp - 1.....	19~20
8. Container comp - 2.....	21~22
9. Cover and belt comp.....	23~24

## Machine Parts



Ref. No	Parts Code	Parts Name
1		Cover and belt comp
2		Engine
3		Handle bar comp
4		Container comp
5		Chassis and gear box comp

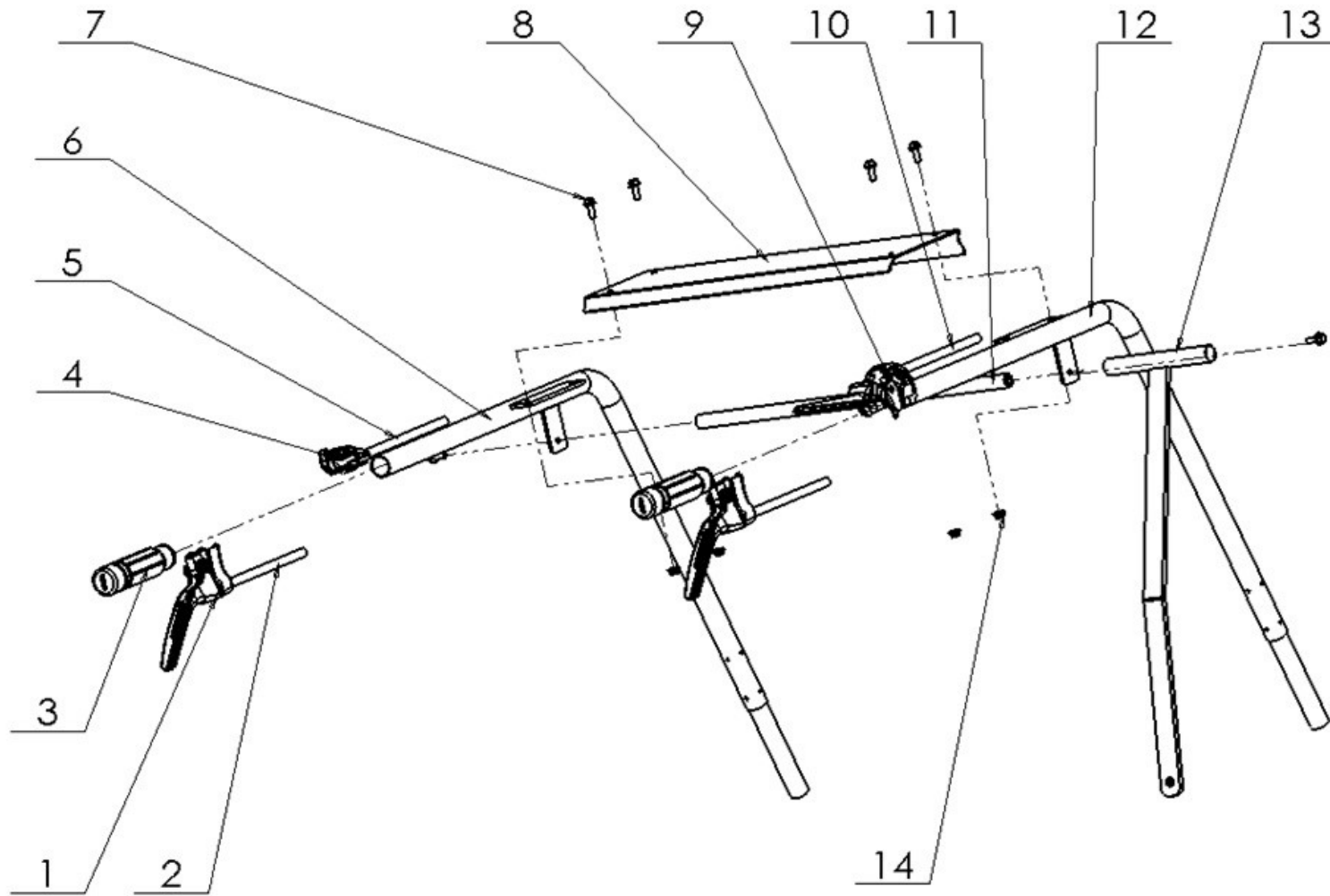
# Engine



## Engine

Ref. No	Parts Code	Parts Name	Q'ty	Remarks
1	10.005.014.3004	Gasoline engine WM170F/P	1	
2		Hexagon flange nut M8 GB/T6177.1-2000	4	
3	11.159.014.0002	Small belt pulley cover	1	
4	11.159.018.0002	Small belt pulley	1	
5		Hexagon flange bolt M8x16 GB/T16674.1-2000	1	
6		Washer 8 GB/T5287-1985	1	
7		Hexagon flange bolt M8x20 GB/T16674.1-2000	1	
8	11.151.011.5000	Engine assembling support	2	

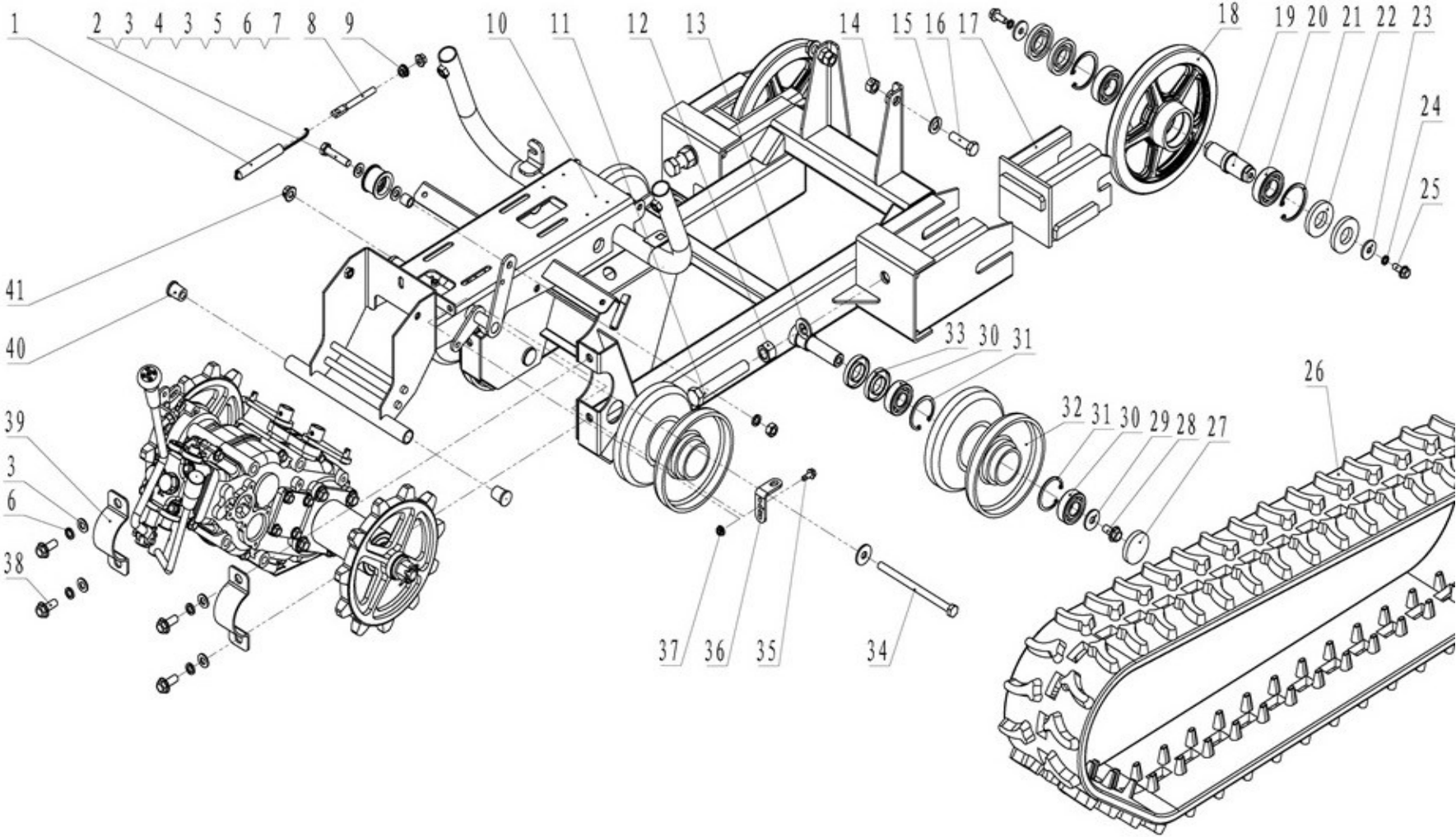
# Handle Bar Comp



## Handle Bar Comp

Ref. No	Parts Code	Parts Name	Q'ty	Remarks
1	11.101.005.0016	Clutch handle	2	
2	11.101.007.2001	AKT style turning cable	2	
3	11.101.001.0001	Grip	2	
4	11.101.031.0005	Shut down switch	1	
5	11.101.002.0501	AKT style clutch cable	1	
6	11.159.053.5000	Left lever welding assembly	1	
7		Hexagon flange bolt M6x16 GB/T5789-2000	6	
8	11.159.055.0001	Connecting panel	1	
9	11.101.005.0102	Main clutch handle	1	
10	11.101.007.5002	AKT style clutch cable-2	1	
11	11.159.054.0001	Crossbar welding assembly	1	
12	11.159.053.0002	Right lever welding assembly	1	
13	11.152.044.1001	Supporting panel welding assembly	1	
14		Hexagon flange nut M6 GB/T6177.1-2000	4	

# Chassis and Gear Box Comp - 1





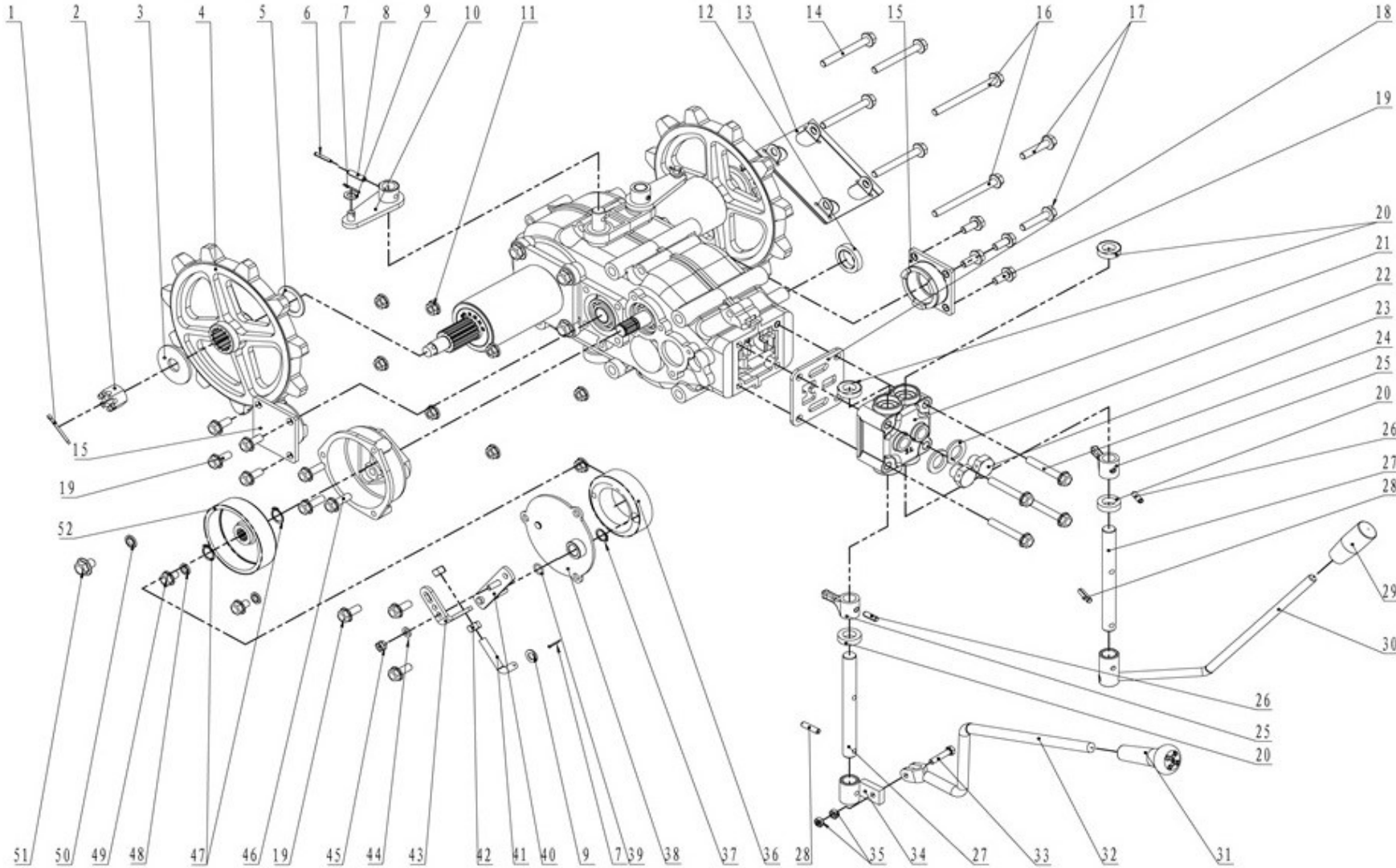
## Chassis and Gear Box Comp - 1

Ref. No	Parts Code	Parts Name	Q'ty	Remarks
1	11.120.103.0501	CE tension spring	1	
2	12.002.009.0160	Bolt M10 x 45	1	
3	12.006.013.0040	Washer 10	7	
4	11.120.019.5000	Tension pulley comp	1	
5	11.106.031.5000	Sheath 10x15x14	1	
6	12.006.008.0042	Spring washer 10	5	
7	12.002.001.0031	Nut M10	1	
8	11.159.005.0001	Adjustable short rod	1	
9	12.001.005.0040	Flange Nut M8	2	
10	11.159.001.0500	Bottom frame comp	2	
11	12.002.009.0063	Bolt M16x100	2	
12	12.001.001.0102	Nut M16	2	
13	12.006.013.0160	Washer 16	2	
14	12.001.001.0100	Nut M12	2	
15	12.006.013.0016	Washer 12	2	
16	12.002.009.0161	Bolt M12x40	2	
17	11.159.085.0002	Tensioning fork	2	
18	11.120.019.5200	Tension pulley	2	
19	11.159.043.0001	Tension wheel shaft	2	
20	12.009.001.0194	Ball bearing 6205-2Z	4	

## Chassis and Gear Box Comp - 1

Ref. No	Parts Code	Parts Name	Q'ty	Remarks
21	12.007.002.0140	Retaining ring 52	4	
22	12.015.028.0012	Oil seal FB25x52x7	8	
23	12.006.011.0010	Washer 8	4	
24	12.006.008.0030	Spring washer 8	4	
25	12.002.012.0142	Flange bolt M8x20	4	
26	11.159.009.0002	Rubber pedrail 160x60x37	2	
27	11.159.031.0002	Thrust wheel oil plug 47x6.5	4	
28	12.002.012.0160	Flange bolt M10x25	4	
29	12.006.011.0020	Washer 10	5	
30	12.009.001.0174	Ball bearing 6204-2Z	8	
31	12.007.002.0047	Retaining ring 47	8	
32	11.159.003.5000	Thrust wheel welding	4	
33	12.016.002.5020	Oil seal FB25x47x7	8	
34	12.002.008.0058	Bolt M10x150	1	
35	12.002.012.0126	Flange bolt M6x20	1	
36	11.159.028.5000	Camshaft arm plate	1	
37	12.001.005;0020	Flange Nut M6	1	
38	12.002.012.0171	Flange Bolt M10x20	4	
39	11.159.011.0001	Output shaft platen	2	
40	11.159.007.0001	Rubber plug	2	
41	12.001.005.0056	Flange nut M10	1	

# Chassis and Gear Box Comp - 2



## Chassis and Gear Box Comp - 2

Ref. No	Parts Code	Parts Name	Q'ty	Remarks
1		Pin 3.2x18 GB/T91-2000	2	
2		Flange nut M16 GB/T6178-1986	2	
3		Washer 16 GB/T96.2-2002	2	
4	11.159.017.0001	Driving pulley	2	
5	11.106.032.5000	V shaft outside gasket	2	
6		Cylindrical pin 3.5x24 GB/T879.1-2000	2	
7		Pin 2x18 GB/T91-2000	3	
8		Cylindrical pin 6x24 GB/T879.1-2000	2	
9		Washer 8 GB/T97.1-2002	3	
10	11.159.025.0001	Turning detached arm	2	
11		Flange Nut M8 GB/T6177.1-2000	8	
12		Oil seal FB24x35x7 GB/T9877-2008	1	
13	11.155.009.0002	Transmission box guard board	1	
14		Flange bolt M8x70 GB/T5789-1986	4	
15	11.159.016.0001	Stopper seat	2	
16		Flange bolt M8x95 GB/T5789-1986	2	
17		Flange bolt M8x40 GB/T5789-1986	2	
18	11.152.062.0501	Lever limited plate	1	
19		Flange bolt M8x20 GB/T5789-1986	11	
20		Oil seal FB15X26X7 GB/T9877-2008	6	

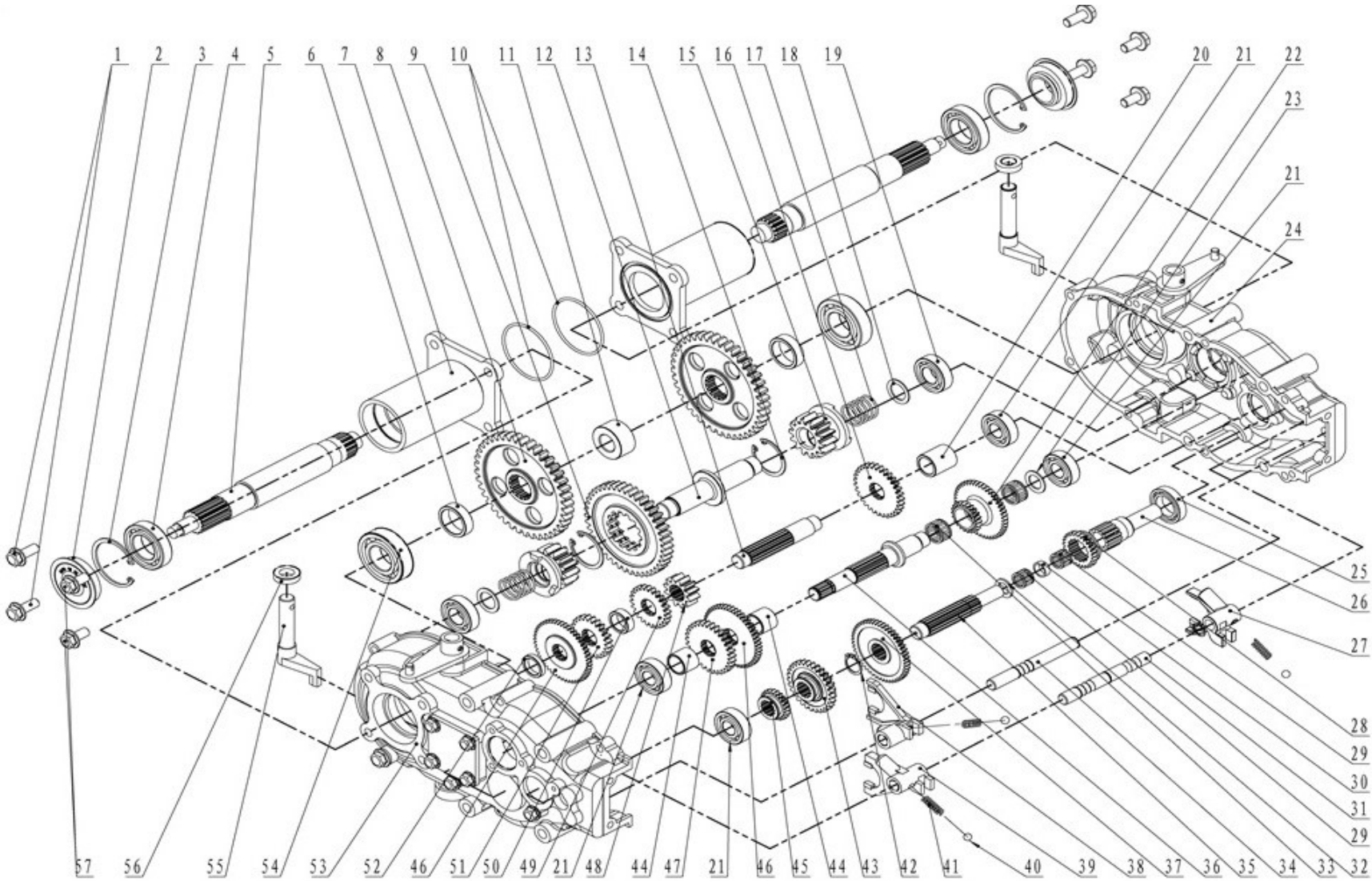
## Chassis and Gear Box Comp - 2

Ref. No	Parts Code	Parts Name	Q'ty	Remarks
21	11.159.022.5000	Fork lever box	1	
22		Combination gasket 16 JB/T982-77	2	
23	11.159.027.0001	Vent plug	2	
24	GB/T5789-1986	Flange bolt M8x55	4	
25	11.152.062.0502	Driving lever	2	
26		Pin 6x18 GB/T879.2-2000	2	
27	11.159.020.0006	Driving lever shat	2	
28		Cylindrical pin 6x24 GB/T879.2-2000	2	
29	11.101.001.0013	Rubber grip	1	
30	11.159.026.6500	High-low gear change lever	1	
31		12 Rod sheath D2402111	1	
32	11.159.026.6000	Shift gear lever	1	
33		Bolt M6x30 GB/T5782-2000	1	
34	11.159.026.5000	Shift gear lever sheath	1	
35		Hexagon nut M6 GB/T6170-2000	2	
36	11159.030.0001	Brake piece (TB50)	1	
37		Clip 14 GB/T894.1-1986	1	
38	11.159.023.5600	Brake box welding assembly	1	
39		O-ring 10.6x1.8 GB/T3452.1-82	1	
40	11.159.028.0001	Brake box turning arm welding assembly	1	

## Chassis and Gear Box Comp - 2

Ref. No	Parts Code	Parts Name	Q'ty	Remarks
41	11.159.029.0001	Hook-headed screw rod	1	
42		Hexagon nut M8 GB/T6170-2000	2	
43	11.159.028.5000	Camshaft arm plate	1	
44		Washer 6 GB/T97.1-2002	1	
45		Hexagon lock nut M8 GB/T889.1-2000	1	
46		Flange bolt M8x20 GB/T5789-1986	3	
47		Clip 16 GB/T894-1986	2	
48		Combination gasket 8 JB/T982-77	2	
49		Flange bolt M8x12 GB/T5789-1986	2	
50		Combination gasket 10 JB/T982-77	1	
51		Flange bolt M10x12 GB/T5789-1986	1	
52	11.159.021.0001	Brake drum	1	

### Chassis and Gear Box Comp - 3



### Chassis and Gear Box Comp - 3

Ref. No	Parts Code	Parts Name	Q'ty	Remarks
1		Flange bolt M10x25 GB/T5789-1986	4	
2	11.120.074.2000	Combination oil seal 30x55x18	2	
3		Clip 55 GB/T893.1-86	2	
4		Ball bearing 6006 GB/T276-1994	2	
5	11.159.020.0004	V shaft	2	
6	11.120.029.0201	V shaft sheath	2	
7	11.159.024.0001	Support seat welding assembly	2	
8	11.102.095.3902	V shaft driven gear	2	
9	11.102.095.3901	IV shaft driven gear	1	
10		O-ring 65x2.65 GB/T3452.1-2005	2	
11	11.120.118.5000	V shaft connect sheath	1	
12	11.159.020.0003	IV shaft	1	
13	11.159.020.0005	III shaft	1	
14		Clip 55 GB/T893.1-86	2	
15	11.102.095.4200	Turning gear	2	
16	11.102.095.4100	2nd Gear driven gear	1	
17	11.120.036.0050	Walking return spring	2	
18	11.159.019.0003	IV shaft gasket	2	
19		Ball bearing 6004 GB/T276-1994	2	
20	11.120.029.0200	III shaft long sheath	1	



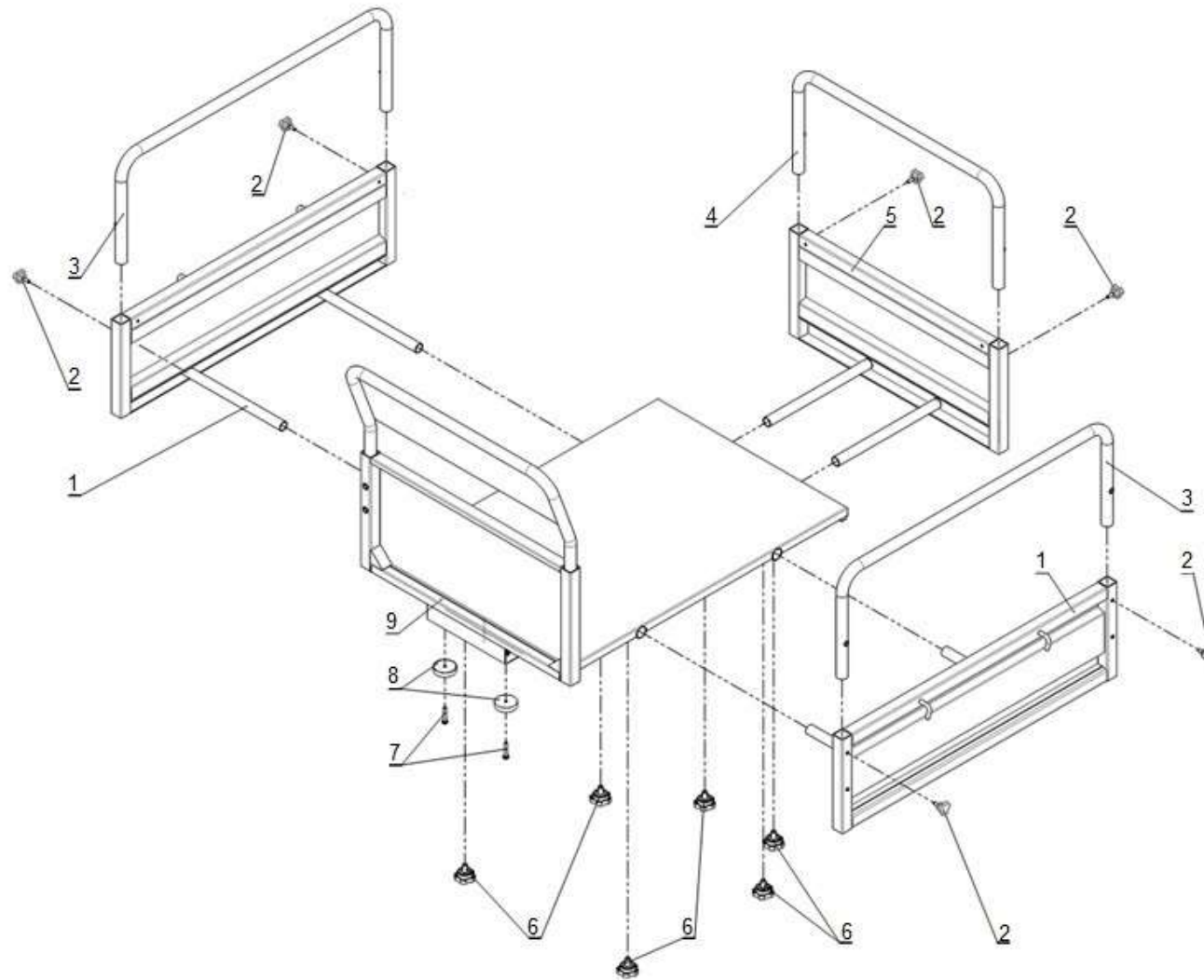
### Chassis and Gear Box Comp - 3

Ref. No	Parts Code	Parts Name	Q'ty	Remarks
21		Ball bearing 6203 GB/T276-1994	5	
22	11.102.095.3700	Vice speed double-toothed gear	1	
23	11.159.019.0002	II shaft thin gasket	1	
24	11.152.039.5001	Right case cover	1	
25		Ball bearing 61905 GB/T276-1994	1	
26	11.103.014.5000	Input shaft	1	
27	11.103.013.1204	High-low speed fork	1	
28	11.102.095.2000	Vice speed slippage gear	1	
29		Needle bearing K14x18x13 JB/T7918-1997	2	
30	11.152.037.5000	Input shaft clip	1	
31	11.106.012.2000	Up fork shaft	1	
32	11.159.019.0001	Gasket between input shaft and I shaft	1	
33		Needle bearing K20x24x13 JB/T7918-1997	2	
34	11.106.012.2001	Down fork shaft	1	
35	11.159.020.0001	I shaft	1	
36	11.159.020.0002	II shaft	1	
37	11.102.095.3000	Vice speed driven gear	1	
38	11.103.013.1205	2-3 Gear fork	1	
39	11.103.013.1203	1-R gear fork	1	
40	12.010.001.0040	Steel ball S ø8	3	

### Chassis and Gear Box Comp - 3

Ref. No	Parts Code	Parts Name	Q'ty	Remarks
41	11.102.052.5000	Spring 8x25	3	
42		Clip 20 GB/T894-1986	1	
43	11.102.095.3500	2-3 Slippage gear	1	
44	11.120.029.0050	II shaft sheath	2	
45	11.102.095.3600	I-R slippage gear	1	
46	11.102.095.3400	I-R driven gear	2	
47	11.102.095.3300	II shaft driving gear	1	
48	11.102.095.4000	III gear driving gear	1	
49	11.102.095.3900	III gear driven gear	1	
50	11.120.029.0150	III shaft middle sheath	1	
51	11.102.095.3800	III shaft driven gear	1	
52	11.120.029.0100	III shaft short sheath	1	
53	11.152.039.5000	Left case cover	1	
54		Ball bearing 6206 GB/T276-1994	2	
55	11.103.013.1200	Turning separate fork	2	
56	12.016.002.3000	Oil seal FB15x26x7	2	
57		Flange bolt M10x20 GB/T5789-1986	4	

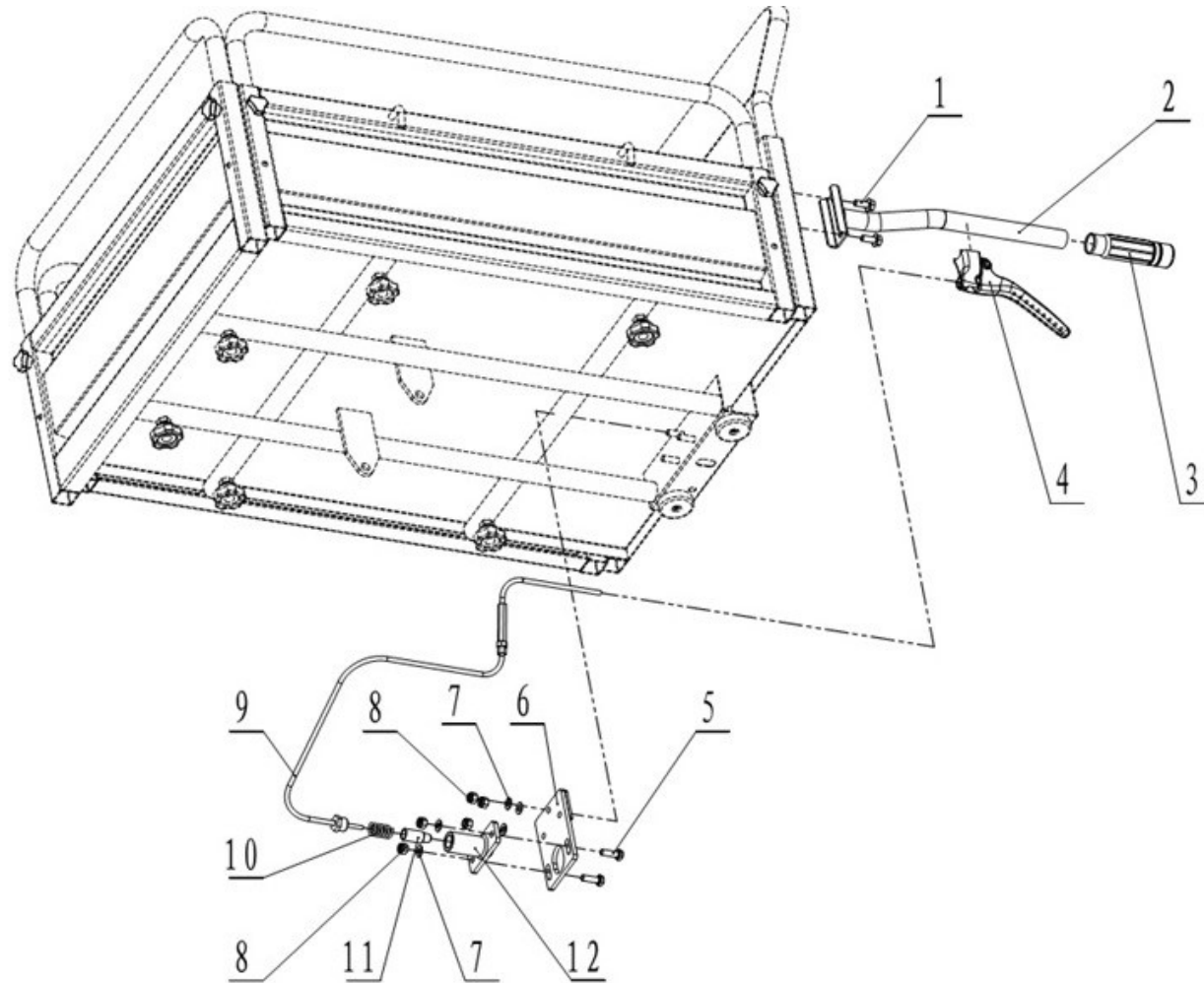
# Container Comp - 1



## Container Comp - 1

Ref. No	Parts Code	Parts Name	Q'ty	Remarks
1	11.159.039.0022	AKT container side board	2	
2	11.101.023.5000	Locking bolt M6x16	6	
3	11.159.082.0001	AKT container side board U shaped tube	2	
4	11.159.082.0002	AKT container back board U shaped tube	1	
5	11.159.039.0541	AKT container back board	1	
6	11.159.048.0002	Star type bolt M10x25	6	
7	12.003.008.0174	Cross pan head screw M6x25	2	
8	11.108.999.5000	Cushion	2	
9	11.159.039.0084	AKT container bottom board	1	

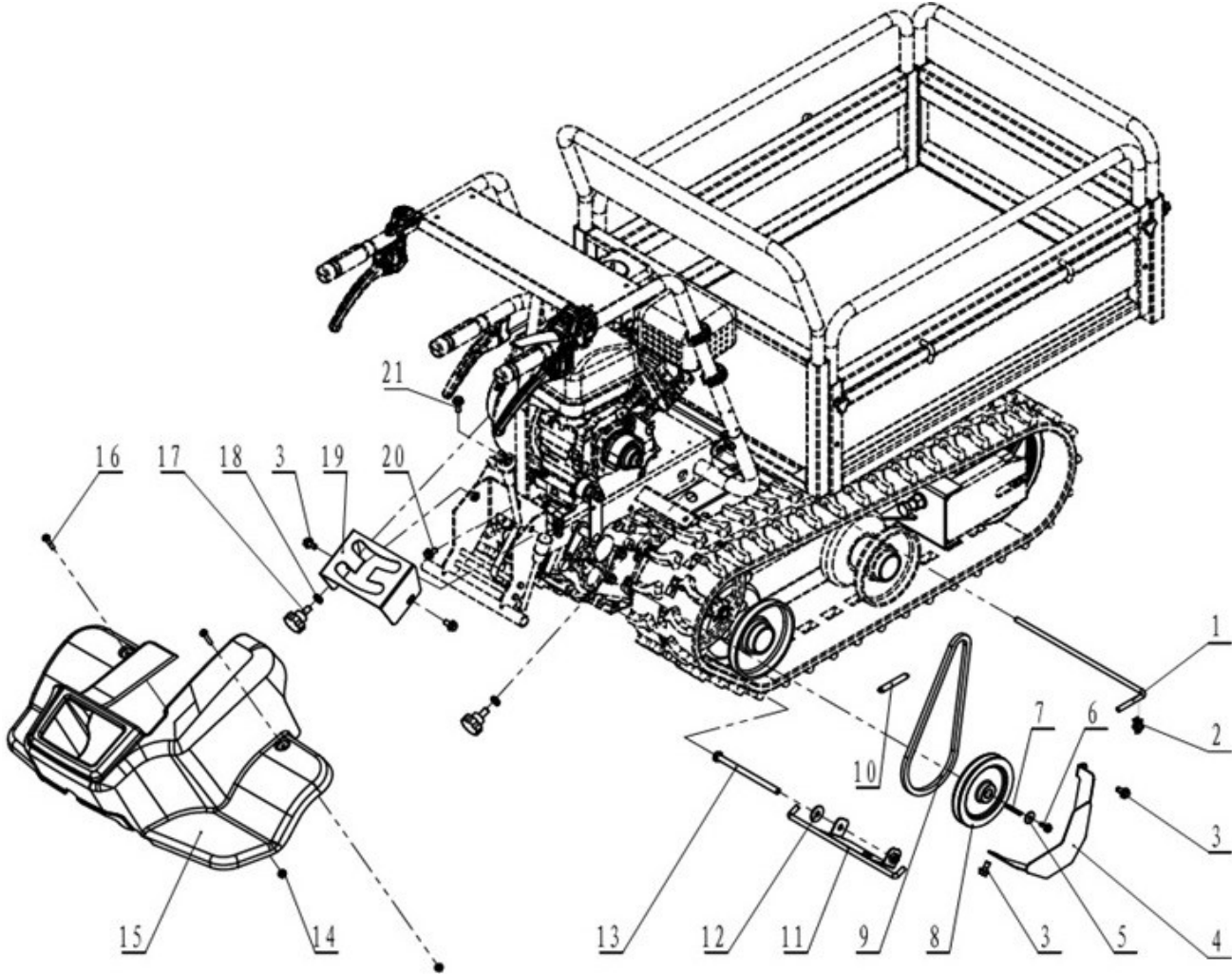
## Container Comp - 2



## Container Comp - 2

Ref. No	Parts Code	Parts Name	Q'ty	Remarks
1		Flange bolt M8x16 GB/T5789-1986	2	
2	11.159.048.0700	Turn-over container handle	1	
3	11.101.001.0001	Grip	1	
4	11.101.005.0027	Clutch handle	1	
5		Flange bolt M8x16 GB/T5789-1986	2	
6	11.120.156.0550	Turn-over container lock pin mounting plate	1	
7		Flat washer 8 GB/T97.1-1985	5	
8		Hexagon lock nut M8 GB/T882-2000	5	
9	11.101.007.2003	Turn-over container cable	1	
10	11.120.104.0006	Height adjustment spring	1	
11	11.101.105.0001	Steering positioning pin	1	
12	11.159.024.0100	Lock pin mounting seat	1	

# Cover and Belt Comp



## Cover and Belt Comp

Ref. No	Parts Code	Parts Name	Q'ty	Remarks
1	11.159.006.0001	Container stay bar	1	
2	11.159.010.0001	Spring clip	1	
3		Flange bolt M8x16 GB/T5789-1986	4	
4	11.159.014.0001	Big belt pulley cover	1	
5		Washer 6 GB/T5287-1985	1	
6		Flange bolt M6x16 GB/T5789-1986	1	
7		Round head key C5x36 GB/T1096-2003	1	
8	11.159.018.0001	Big belt pulley	1	
9	11.120.023.5000	Belt 13x785	1	
10	11.120.073.0500	Tension pulley return spring	1	
11	11.159.013.0001	Cover support frame	1	
12		Washer 10 GB/T96.1-2002	1	
13		Bolt M10x150 GB/T5781-1986	2	
14		Flange nut M6 GB/T6177.1-2000	2	
15	11.159.012.0001	Plastic cover	1	
16		Cross pan head screw M6x35 GB/T818-2000	2	
17		Star type bolt M10x20	2	
18		Hexagon thin nut M10 GB/T6172.1-2000	2	
19	11.152.062.0500	Limit board	1	
20		Flange bolt M8x20 GB/T5789-1986	18	
21	12.050.001.0001	Straight forced filling oil cup M6	1	