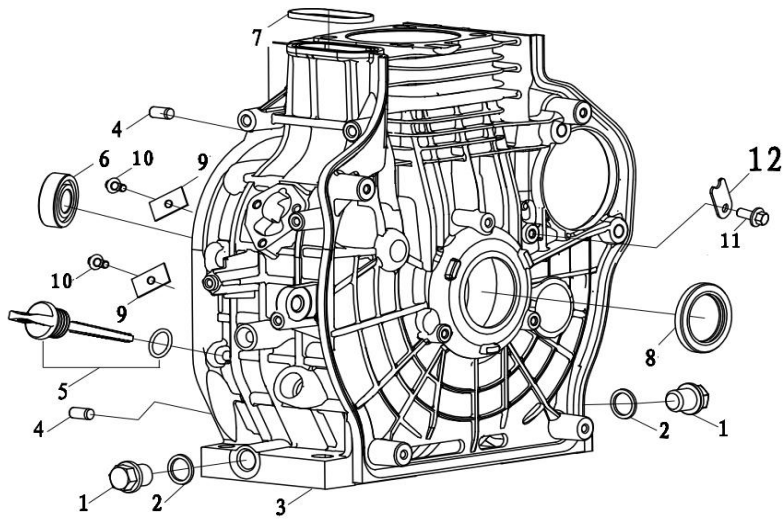


MOTOR DIESEL D460FD

(Crankcase Assy.)



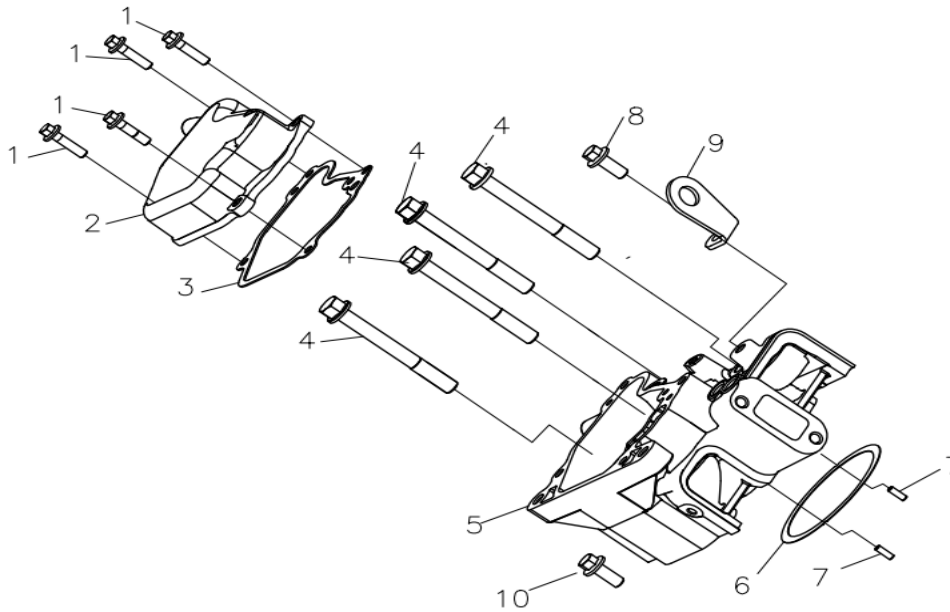
No.	Part No.	Description	Reqd. QTY
1	110260051-0001	Sealing plug screw	2
2	380450830-0001	Flat washer	2
3	110810295-0001	Crankcase body	1
4	380600169-0001	ocation pin	2
5	110690051-0001	Oil rule combination	1
6	380630504-0001	Bearing	1
7	380840792-0001	Seal ring	1
8	380650574-0001	Oil seal	1
9	130240004-0001	Plate,Bearing(L)	2
10	380140040-0005	Hexagon bolt with flange	2

(Crankcase cover)

This exploded view diagram illustrates the assembly of a crankcase cover. The central component is the crankcase cover (10), which features a circular opening for the crankshaft. Surrounding this opening are various internal components, including a crankshaft (11) and a crank pin (12). The cover is secured by a series of bolts (1) and washers (2). A gasket (17) is positioned between the cover and the crankcase. The assembly is completed with a crankcase cover cap (18) and a crankcase cover cap bolt (19). The diagram also shows a crankcase cover cap gasket (16) and a crankcase cover cap washer (15).

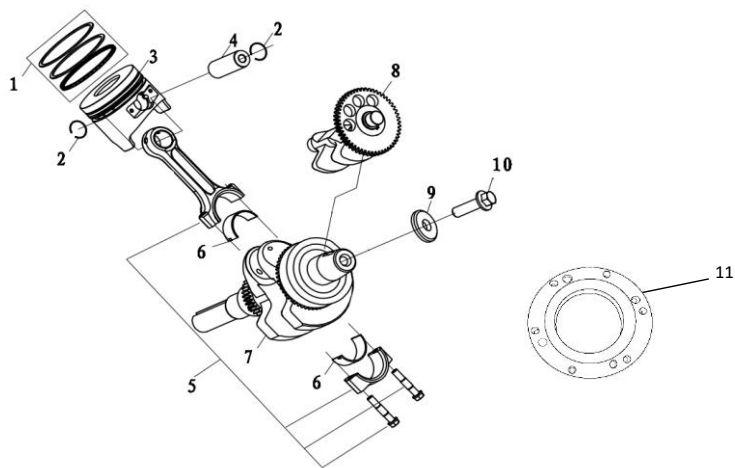
		Description	
No.	Part No.		Reqd. QTY
1	380140051-0005	Hexagon bolt with flange	14
2	380650575-0001	Oil seal	1
4	150290021-0001	Engine oil Strainer	1
5	110690051-0001	Oil rule combination	1
6	380070288-0001	Hexagon bolt	1
7	380450516-0001	Flat washer	1
8	381150514-0001	Compression spring	1
9	380640016-0001	Steel ball	1
10	110820187-0001	Crankcase cover	1
11	150010101-0001	Components of oil pump	1
12	380630504-0001	Bearing	1
13	380780123-0001	coupling	1
14	150040031-0001	Oil pump cover	1
15	380140003-0005	Hexagon bolt with flange	3
16	171750048-0001	Components of governor gear	1
17	110830047-0001	Crankcase cover gasket	1
18	130280003-0001	Plate,Bearing(R)	1
19	380140001-0006	Hexagon bolt with flange	1

(Cylinder Head Assy.)



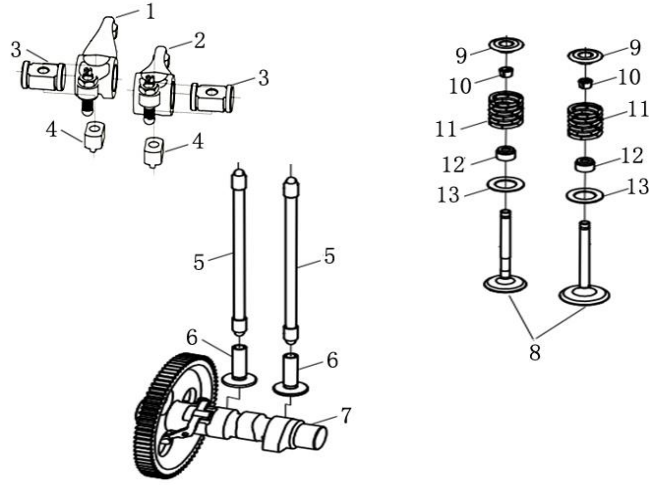
No.	Part No.	Description	Reqd. QTY
1	380140102-0004	Hexagon bolt with flange	4
2	120220046-0001	Cylinder head cover assy	1
3	120250036-0001	Gasket for cylinder head cover	1
4	380140634-0001	Hexagon bolt with flange	4
5	120080724-0001	Cylinder head	1
6	120150218-0001	Gasket for cylinder head	1
	120150219-0001	Gasket for cylinder head	1
	120150220-0001	Gasket for cylinder head	1
7	380600167-0001	ocation pin	2
8	380140004-0004	Hexagon bolt with flange	1
9	120550005-0001	Lifting eye	1
10	380140051-0005	Hexagon bolt with flange	1

(Connecting rods and Crankshaft)



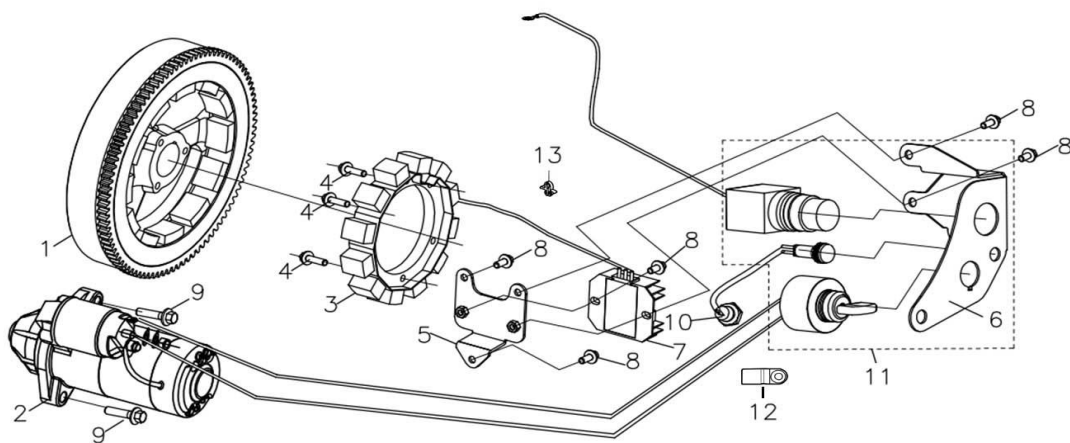
No.	Part No.	Description	Reqd. QTY
1	130070224-0001	Piston ring combination	1
2	380560103-0001	Steel cable baffle ring	2
3	130030258-0001	Piston	1
4	130060071-0001	Piston pin	1
5	130150089-0001	Connecting rod	1
6	110280009-0001	bearing bush	2
7	130290589-0001	crankshaft	1
8	130430019-0001	Balancing shaft	1
9	380450702-0001	Flat washer	1
10	380140457-0001	Hexagon bolt	1
11	130610006-0001	The crankshaft flange	1

(Valve Train)



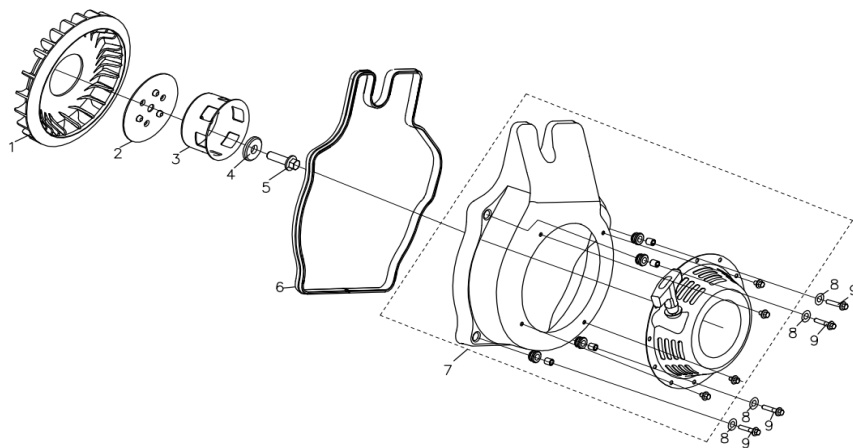
No.	Part No.	Description	Reqd. QTY
1	140450072-0001	Valve rocker combination(Inlet)	1
2	140450073-0001	Valve rocker combination(Outle)	1
3	140510062-0001	Valve rocker shaft	2
4	140540029-0001	Rocker support seat	2
5	140670055-0001	Push rod	2
6	140690023-0001	Lifter, Valve	2
7	140020175-0001	Camshaft assy	1
8	500550100-0001	Valve Kit	1
9	140380040-0001	Retainer, valve spring	2
10	140390015-0001	Valve locker	4
11	140340040-0001	Inner spring of valve	2
12	140400012-0001	Valve oil seal	2
13	140360014-0001	Seat, valve spring	2

(Electrical System)



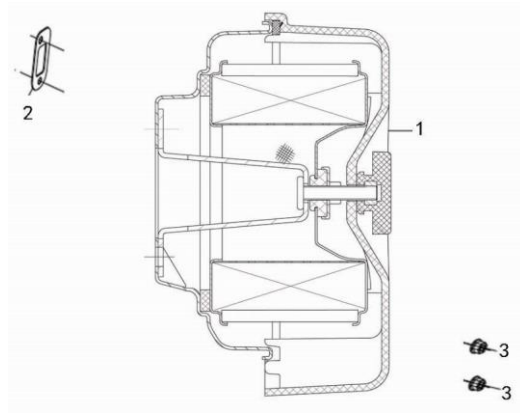
No.	Part No.	Description	Reqd. QTY
1	270020213-0001	FLYWHEEL COMP	1
2	270360060-0001	Components of starting motor	1
3	270190013-0001	Components of charging current armature	1
4	380140102-0004	Hexagon bolt with flange	3
5	270910010-0001	rectifier voltage regulator Support	1
6	271380040-0001	Ignition Switch Support	1
7	270880146-T270	Rectifier/Variable voltage rectifier	1
8	380140215-0003	Hexagon bolt with flange	5
9	380140126-0004	Hexagon bolt with flange	2
10	283690003-0001	Oil level alarm	1
11	271810029-0001	Start control switch	1
12	270280020-0001	Tension disc for wire bundle	1
13	380930027-0001	Location wire nail	2

(Pullstart Assy)



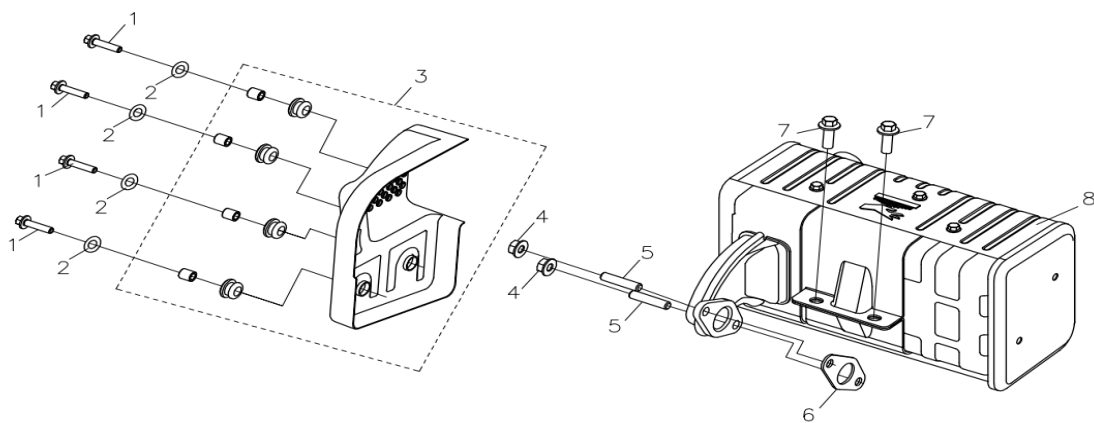
No.	Part No.	Description	Reqd. QTY
1	160180030-0001	Impeller	1
2	660880002-0001	Impeller pressing plate	1
3	193590019-0001	Starting disc	1
4	380450702-0001	Flat washer	1
5	380140457-0001	Hexagon bolt	1
6	380840758-0001	Seal ring	1
7	193490200-0001	Manual starting assembly	1
8	380450828-0001	Flat washer	4
9	380140095-0005	Hexagon bolt with flange	4

(Air cleaner)



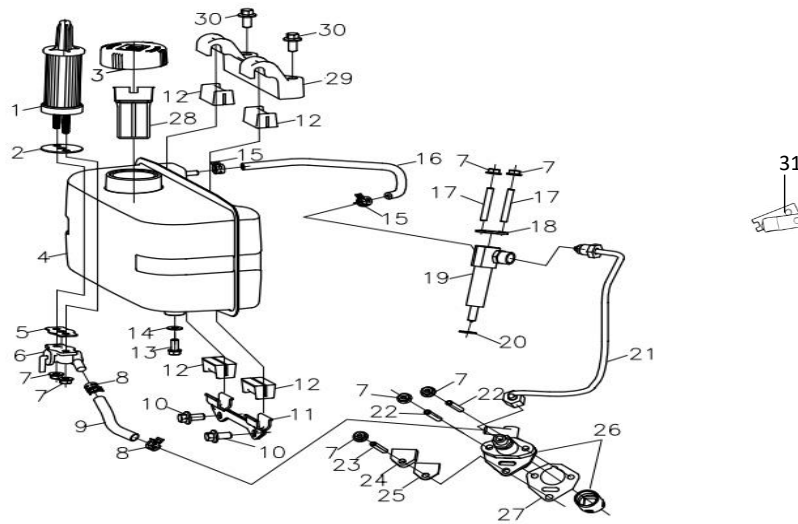
No.	Part No.	Description	Reqd. QTY
1	180010127-0001	Air filter	1
2	183000002-0001	Air intake gasket	1
3	380370074-0002	Hexagon nut with flange	2

(Muffler)



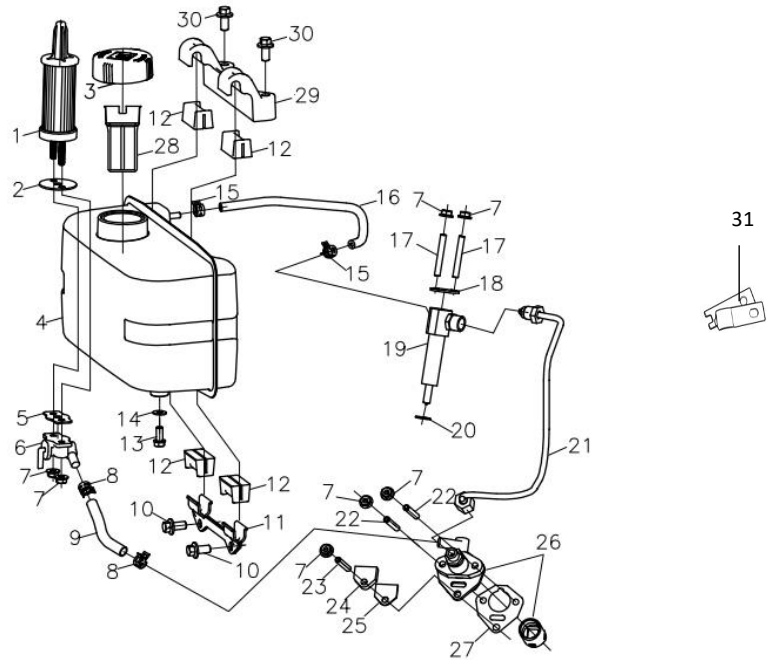
No.	Part No.	Description	Reqd. QTY
1	380140102-0004	Hexagon bolt with flange	3
2	380450828-0001	Flat washer	3
3	160190059-0001	air deflector	1
4	380340005-0005	Hexagon nut	2
5	380180098-0001	Stud	2
6	180660072-0001	Muffler gasket	1
7	380140004-0004	Hexagon bolt with flange	2
8	180572426-0001	Muffler	1

(Fuel Sysstem)



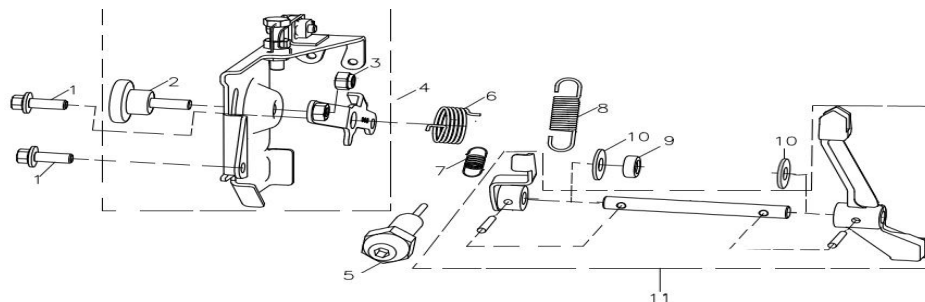
No.	Part No.	Description	Reqd. QTY
1	170010030-0001	Fuel filter	1
2	660310019-0001	Sealing washer	1
3	170870089-0001	Tank cover	1
4	170500938-0001	Tank	1
5	171020032-0001	Oil switch gasket	1
6	170980092-0001	Components of oil switch	1
7	380370066-0001	Hexagon nut with flange	7
8	380960198-0001	Clip combination	2
9	380750661-0002	Oil tube	1
10	380140004-0004	Hexagon bolt with flange	2
11	301560017-0001	fuel Tank Bracket	1
12	170700141-0001	Tank damping cushion	4
13	110260056-0001	Sealing plug screw	1
14	380450916-0001	Flat washer	1
15	380960170-0002	Clip combination	2
16	380750487-0002	Oil tube	1
17	380180138-0001	Stud	2
18	174180001-0001	Fuel Pump Platen	1

(Fuel Sysstem)



No.	Part No.	Description	Reqd. QTY
19	173010006-0001	Injector	1
20	380450829-0001	Flat washer	1
21	380750529-0001	Oil tube	1
22	380180137-0001	Stud	2
23	380180145-0001	Stud	1
24	174160001-0001	Fuel Pump Cover	1
25	174170001-0001	Fuel Pump Seal	1
26	174130003-0001	Fuel Pump	1
27	174140001-0001	Fuel Pump Gasket	1
	174140001-0002	Fuel Pump Gasket	1
	174140001-0003	Fuel Pump Gasket	1
28	170720010-0001	Pouring orifice filter screen combination	1
29	301560016-0001	fuel Tank Bracket	1
30	380140005-0006	Hexagon bolt with flange	2
31	380950396-0001	Pipe clip	1

(Governor System)



No.	Part No.	Description	Reqd. QTY
1	380140215-0003	Hexagon bolt with flange	2
2	171340029-T270	Throttle control handle	1
3	380350008-0001	Hexagon locknut for nonmetal insert	1
4	171580022-0001	Speed control module	1
5	174230001-0001	Fuel adjustment combination	1
6	381160150-0001	Torsion spring	1
7	381140478-0001	Tension spring	1
8	171600051-0001	Governing spring	1
9	380650377-0001	Oil seal	1
10	380450592-0001	Flat washer	2
11	194530021-0001	SHIFTING FORK Combination	1