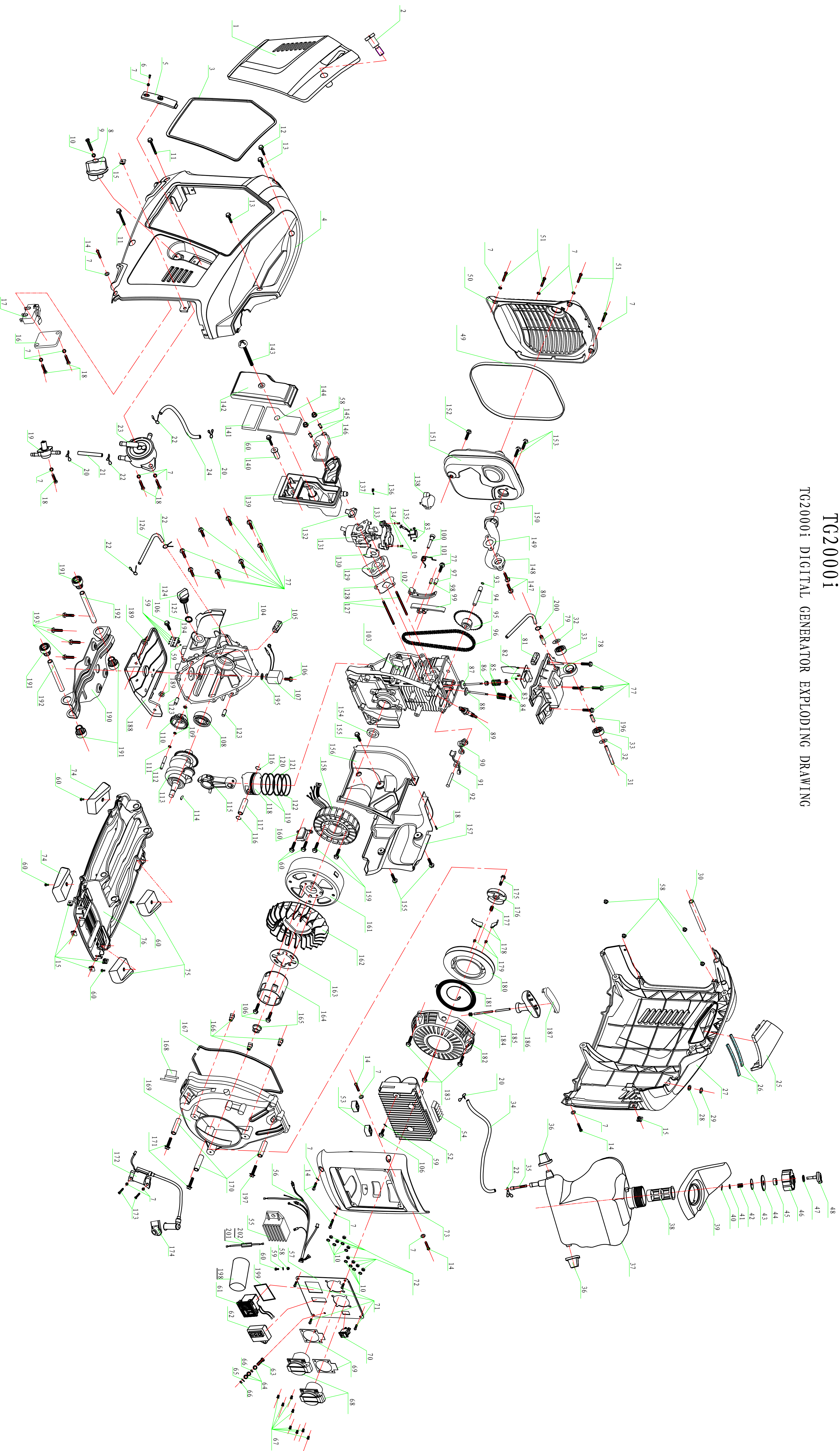


TG2000i
TG2000i DIGITAL GENERATOR EXPLODING DRAWING



TG2000i

NO.	PART NO.	PART NAME	QTY
1	TG2000i.04-5	maintenance cover	1
2	21133-B001-0000	maintenance cover screw	1
3	TG2000i.04-6	sponge seal	1
4	TG2000i.04-7	left encloser subassembly	1
5	21004-B001-0000	handle support	1
6	GB/T818-2000	Screw M5×8	1
7	GB/T95-1985	Washer φ5	22
8	14323-A142-0000	switch handle	1
9	GB/T818-2000	Screw M4×16	1
10	GB/T95-1985	Washer φ4	9
11	GB/T16674-1996	bolt M6×145	2
12	GB/T16674-1996	bolt M6×100	1
13	GB/T16674-1996	bolt M6×30	2
14	GB/T9074.1-1988	Screw M5×20	6
15	TG2000i.01-5	nut M5	6
16	21101-B001-0000	engine switch cover	1
17	23106-B001-0000	engine switch	1
18	GB/T845-1985	Tapping screw ST4.2×12	5
19	14330-A142-0000	fuel switch	1
20	14010-A142-0000	Clip φ7×0.8	3
21	14302-A142-0000	Fuel tube φ4×φ8	1
22	14305-A142-0000	Clip φ9×1.2	5
23	14340-A142-0000	fuel pump	1
24	14303-A142-0000	Fuel tube φ4×φ8	1
25	TG2000i.04-2	spark plug maintenance cover	1
26	TG2000i.04-3	spark plug maintenance cover pack	1
27	TG2000i.04-1	right encloser subassembly	1
28	TG2000i.04-9	Washer φ13	1
29	GB/T894.1-1986	circlip for shaft	1
30	TG2000i.04-15	engine support 1	1
31	TG2000i.04-16	engine support 2	1
32	21016-B001-0000	top damping washer	2
33	21009-B001-0000	top absorber	2
34	14301-A142-0000	Fuel tube φ4×φ8	1
35	14350-A142-0000	fuel filter	1
36	14309-A142-0000	fuel tank support	2
37	TG2000i.02-2	fuel tank	1
38	TG2000i.02-3	filter cup	1
39	TG2000i.02-1	overflow trough	1
40	14372-A142-0000	split pin	1
41	GB/95-1985	Washer φ5	1
42	14326-A142-0000	tank cap spring	1
43	21025-B001-0000	Washer φ6.5×φ24×1.4	1
44	14323-A142-0000	fuel tank cap seal	1
45	14324-A142-0000	fuel tank cap filter	1

46	14322-A142-0000		fuel tank cap	1
47	14321-A142-0000		O-ring	1
48	14328-A142-0000		tank cap lever	1
49	TG2000i.04-10		muffler cover seal	1
50	TG2000i.04-4		muffler cover	1
51	GB/T818-2000		Screw M5×14	4
52	TG2000i.03.02		inverter	1
53	22002-B001-0000		inverter bottom support	2
54	TG2000i.03-3		fuel tank absorber	1
55	23160-B001-0000		Bridge Rectifier	1
56	TG2000i.03.03		Internal wire assembly	1
57	TG2000i.03-1		panel	1
58	GB/T6177.1-2000		nut M5	9
59	GB861.1-87		Washer $\phi 6$	9
60	GB/T16674-1996		bolt M5×12	9
61	23130-B001-0000		DC socket	1
62	TG2000i.03.01		ignition	1
63	GB/T818-2000		Screw M5×16	1
64	GB/T95-1985		Washer $\phi 5$	3
65	GB/T859-1987		spring lock washer $\phi 5$	1
66	GB/T6172.1-2000		nut M5	2
67	GB/T119.1-2000		Screw M4×12	8
68	23140-B001-0000		AC socket	2
69	23141-B001-0000		AC socket mat	2
70	23150-B001-0000		Intelligent throttle switch	1
71	GB/T845-1985		Tapping screwST4.8×16	5
72	GB/T6172.1-2000		nut M4	8
73	TG2000i.04-8		panel cover	1
74	21130-B001-0000		left absorbe foot	2
75	21240-B001-0000		right absorbe foot	2
76	TG2000i.01-1		pedestal	1
77	GB/T16674-1996		bolt M6×25	10
78	ZJ158F.01-4		Cylinder head cover	1
79	ZJ158F.01-2		pipe joint	1
80	ZJ158F.01-3		gas circle pipe $\phi 7 \times \phi 11$	1
81	ZJ158F.01-4		Oil filter	1
82	ZJ158F.01.01		ventilate board subassembly	1
83	GB/T818-1998		Screw M3×5	5
84	13004-A142-0000		Valve retainer	2
85	ZJ158F.02-1		Valve spring	2
86	ZJ158F.02-03		Valve seal	1
87	ZJ158F.02-2		Intake valve	1
88	ZJ158F.02-3		Exhaust valve	1
89	11101-A142-003		Spark plug	1
90	ZJ158F.05.03		Intake rocker subassembly	1
91	ZJ158F.05.04		Exhaust rocker subassembly	1
92	ZJ158F.05-7		Rocker shaft	1

93	ZJ158F.05-2		O-ring ϕ 2X6	1
94	ZJ158F.05-1		Cam shaft	1
95	ZJ158F.05-01		Cam subassembly	1
96	ZJ158F.05.02		timing chain	1
97	ZJ158F.05-8.1		subsidiary lead bar sleeve	1
98	ZJ158F.05-9		Locating pin ϕ 6 \times 15	1
99	ZJ158F.05-8		subsidiary lead bar	1
100	ZJ158F.05-12		torsion spring pin	1
101	ZJ158F.05-11		lead bar torsion spring	1
102	ZJ158F.05-10		main chain lead bar	1
103	ZJ158F.02.01		Cylinder subassembly	1
104	ZJ158F.03-1		Crankcase	1
105	ZJ158F.03-5		Oil filter	1
106	GB/T16674-1996		bolt M6 \times 12	6
107	ZJ158F.03.01		Oil level sensor	1
108	GB/T276-1994		Bearing 6204/-P53	1
109	GB/T95-1985		Washer ϕ 6	2
110	ZJ158F.03-3		whisk oil gear	1
111	GB895.2-1986		gear shaft clip	1
112	ZJ158F.03-4		gear shaft	1
113	ZJ158F.04.02		Crankshaft subassembly	1
114	12233-A142-0000		Semicircular key 3 \times 13	1
115	ZJ158F.04.01		Connection rod	1
116	ZJ158F.04-7		Piston pin clip	2
117	ZJ158F.04-6		Piston pin	1
118	ZJ158F.04-5		Piston	1
119	ZJ158F.04-4		spring expander	2
120	ZJ158F.04-3		flat type oil ring	1
121	ZJ158F.04-2		Piston ring II	1
122	ZJ158F.04-1		Piston ring I	1
123	ZJ158F.02-4		Locating pin ϕ 8 \times 20	2
124	12223-A142-0000		Oil dipstick	1
125	12222-A142-0000		Oil dipstick seal	1
126	ZJ158F.03-7		Pumping fuel pipe ϕ 6 \times ϕ 10	1
127	ZJ158F.09-5		bolt M5 \times 115	2
128	14001-A142-0000		Insulating board gasket	1
129	ZJ158F.09-2		Intake seat	1
130	14004-A142-0000		Carburetor gasket	1
131	ZJ158F.09-02		Carburetor	1
132	14201-A142-0000		Intake pipe gasket	1
133	14422-A142-0000		Governor motor bottom hood	1
134	GB/T818-2000		Screw M4 \times 10	2
135	14430-A142-0000		Governor motor	1
136	14404-A142-0000		Governor joint	1

137	14403-A142-0000		Governor damping spring	1
138	14421-A142-0000		Governor motor top hood	1
139	ZJ158F.09-01-2		Air cleaner body	1
140	ZJ158F.09-01-7		Air cleaner body nesting	1
141	ZJ158F.09-01-6		Air cleaner filter	1
142	ZJ158F.09-01-5		Air cleaner baffle	1
143	ZJ158F.09-01-4		Screw M6X16	1
144	ZJ158F.09-01-3		Air cleaner filter	1
145	ZJ158F.02.83.4		Intake pipe cover	2
146	ZJ158F.09-01-1		Intake pipe top hood	1
147	GB/T16674-1996		bolt M6×22	2
148	ZJ158F.10-2		Exhaust pipe	1
149	ZJ158F.10-3		Exhaust pipe gasket	1
150	ZJ158F.10-1		Muffler gasket	1
151	ZJ158F.10.01		Muffler	1
152	GB/T5789-2000		bolt M6×65	1
153	GB/T5789-2000		bolt M6×45	2
154	ZJ158F.02-5		Oil seal $\phi 20 \times 32 \times 6$	1
155	GB/T16674-1996		bolt M6×10	3
156	ZJ158F.07-8		Left reflecting board	1
157	ZJ158F.07-3		Right reflecting board	1
158	ZJ158F.06.03		Stator subassembly	1
159	GB/T16674-1996		bolt M5×35	2
160	ZJ158F.06.01		Igniton trigger	1
161	ZJ158F.06.04		Rotor subassembly	1
162	ZJ158F.07-5		Cooling fan	1
163	ZJ158F.07-4		Orientation board	1
164	ZJ158F.07-2		Ratch rotary table	1
165	GB/T6177.2-2000		nut M12×1.25	1
166	ZJ158F.07-6.1		Cooling hood nesting	3
167	ZJ158F.07-7		Cooling hood cover packing	1
168	ZJ158F.06.05		Rotor turn jacket	1
169	ZJ158F.07-6		Cooling hood	1
170	ZJ158F.02.82.2		Cooling hood cannula	3
171	GB/T16674-1996		bolt M6×60	2
172	ZJ158F.06.02		ignition	1
173	GB/T845-1985		Tapping screw ST4.8×19	2
174	ZJ158F.06.06		ignition booster cap	1
175	ZJ158F.08-6		Starter screw	1
176	ZJ158F.08-8		Pawl impaction board	1
177	ZJ158F.08-7		Impaction spring	1
178	ZJ158F.08-9		Pawl	2
179	ZJ158F.08-5		Pawl spring	2
180	ZJ158F.08-3		Startup disk	1
181	ZJ158F.08-4		Coil spring	1
182	ZJ158F.08-1		Starter shell	1

183	GB/T16674-1996		bolt M6×16	3
184	YD25.02.01-2		Rope nesting	1
185	17128-A142-0000		Rope \varnothing 3.5X1500	1
186	17130-A142-0000		Handle	1
187	17132-A142-0000		Handle cover	1
188	ZJ158F.07-01		bottom reflecting board	1
189	GB/T6177.1-2000		nut M6	2
190	TG2000i.01-4		engine bottom support	1
191	TG2000i.01-2		bottom damping support	4
192	TG2000i.01-3		engine support pipe	2
193	GB/T5789-2000		bolt M8×30	4
194	17205-A142-0000		ground plate	1
195	ZJ158F.03-2		O-ring \varnothing 16X2.4	1
196	21008-B001-0000		engine top support	1
197	GB/T5789-2000		bolt M6×50	1
198	16301-A142-0000		Heat shrinkable tube	1
199	23131-B001-0000		DC socket washer	1
200	ZJ158F.03-6		Fuel tube ϕ 11	1
201	23128-B001-0000		fuse box	1
202	23129-B001-0000		fuse	1
201	23123-B001-0000		spark plug wrench	1
202	23124-B001-0000		screw driver	1
203	23125-B001-0000		screw driver handle	1
204	14327-B001-0000		Oil pot	1
205	23120-B001-0000		plug	2
206	23132-B001-0000		T-charge wire	1
207	23133-B001-0000		Owner's manual	1

ZJ158F.0 8-6		06.03.133	1
ZJ158F.0 8-8		06.03.134	1
ZJ158F.0 8-7		06.03.132	1
ZJ158F.0 8-9		06.03.135	2
ZJ158F.0 8-5		06.03.131	2
ZJ158F.0 8-3		06.04.066	1
ZJ158F.0 8-4		06.03.130	1
ZJ158F.0 8-1		04.05.01.0490 6	1
YD25.02. 01-2		04.03.0002908	1

17128-A142-0000		04. 03. 0002908	1
17130-A142-0000		04. 05. 01. 0190 6	1
17132-A142-0000		04. 050. 1. 0200 6	1
21004-B001-0000		04. 05. 01. 0330	1

FIG 175 A 187 CONJUNTO ARRANQUE COMPLETO	33473
--	-------