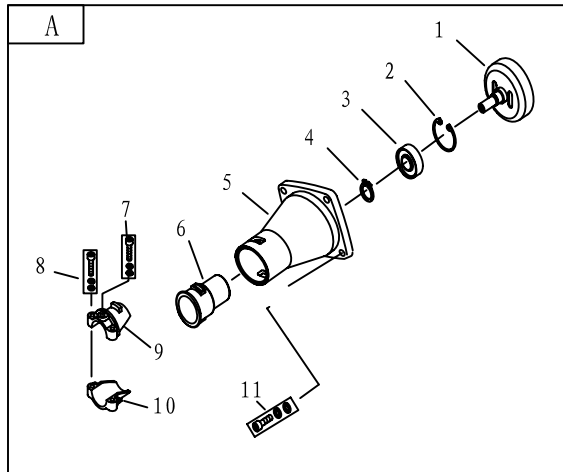
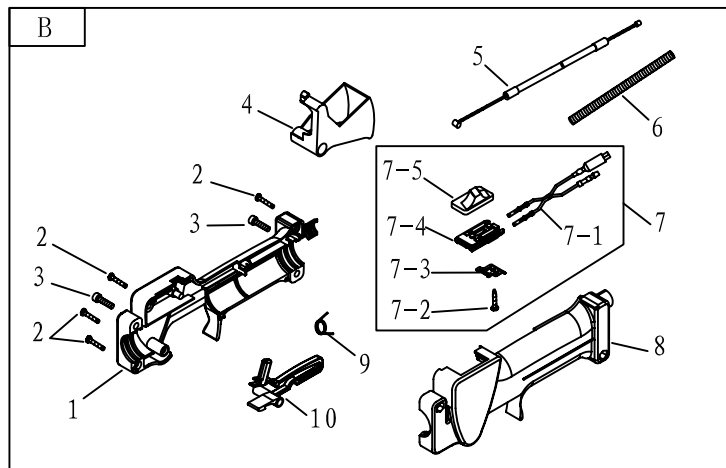


MACHINE SPARE PARTS LIST 4GS-50

1/2

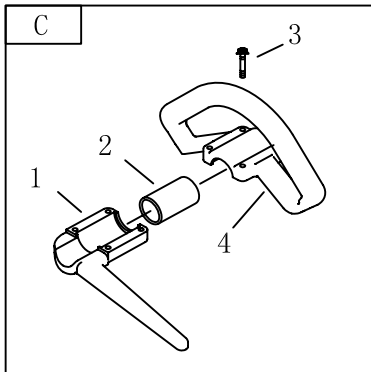


NO.	PART NO.	PART NAME	QTY.
A	CG260A. 1A	Clutch Comp.	
1	CG260A. 1A-2	Clutch Drum Comp.	1
2	GB/T893. 1	Stop Ring 35	1
3	GB/T276	Bearing 6202-2RZ/P6	1
4	GB/T894. 1	Stop Ring 15	1
5	CG261. 1-1	Linker	1
6	CG305F. 14-2	Rubber Cover	1
7	GB/70+GB93+GB97	Screw M5×12	1
8	GB/70+GB93+GB97	Screw M5×25	2
9	CG305F. 14-4	Clamp A	1
10	CG305F. 14-3	Clamp B	1
11	GB/70+GB93+GB97	Screw M6×20	4

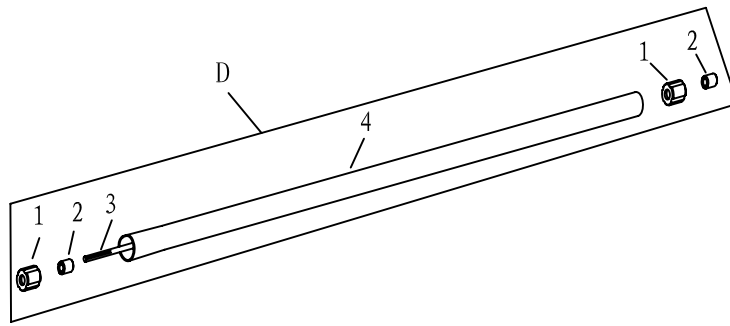


NO.	PART NO.	PART NAME	QTY.	NO.	PART NO.	PART NAME	QTY.
J	SG230. 1	Lever Ass'y		7-1	SG230. 1. 2E. 1	Stop Line	1
1	SG230. 1-1	Box, Right	1	7-2	GB/T845	Screw ST2.9×13	1
2	GB/T845	Screw ST3.5×19	5	7-3	SG230. 1. 2-1	Touch Reed	1
3	GB/T70. 1	Screw M5×18	2	7-4	SG230. 1. 2-2	Guide Seat	1
4	SG230. 1-5	Throttle Lever	1	7-5	SG230. 1. 2-3	Stop Switch	1
5	CG260. 2. 2D	Cable Comp.	1	8	SG230. 1-2	Box, Left	1
6	BG328A-2	Tube	1	9	SG230. 1-6	Spring	1
7	SG230. 1. 2E	Stop Button comp.		10	SG230. 1-4	Safety Lever	1

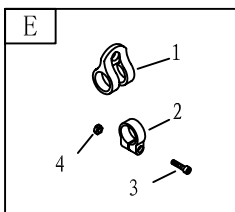
MACHINE SPARE PARTS LIST 4GS-50



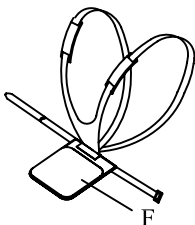
NO.	PART NO.	PART NAME	QTY.
C	CG245Q. 11	Handle Comp.	
1	CG245Q. 11. 1	Handle Cover	1
2	BG330-CE. 1-2	Rubber Cover	1
3	CG245Q. 11-1	Handle	1
4	1E40F-5A-CE-4	Screw M5×30	4



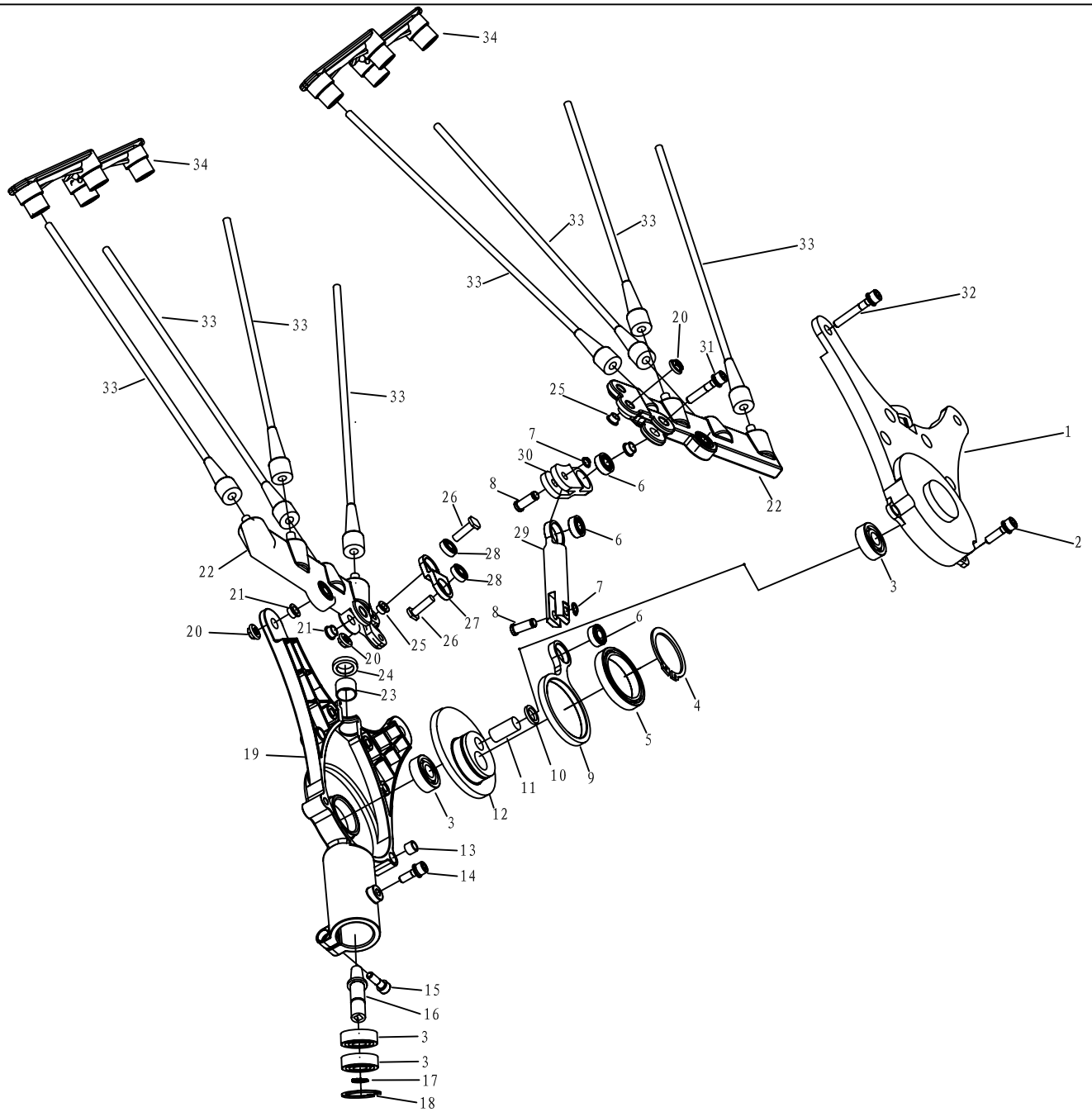
NO.	PART NO.	PART NAME	QTY.
D	4GS-50. 3	Pipe Comp.	
1	BG-328. 9. 4-5	Rubber Cover	6
2	BG-328. 9. 4-4	Oil-bearing	6
3	4GS-50. 3-1	Drive Shaft	1
4	4GS-50. 3-2	Pipe	1



NO.	PART NO.	PART NAME	QTY.
D	CG260. 3	Holder Ass'y	
1	CG260. 3. 1	Harness Clamp	1
2	CG260. 3-1	Clamp	1
3	GB/T70. 1	Screw M5×20	1
4	GB/T889. 1	Nut M5	1

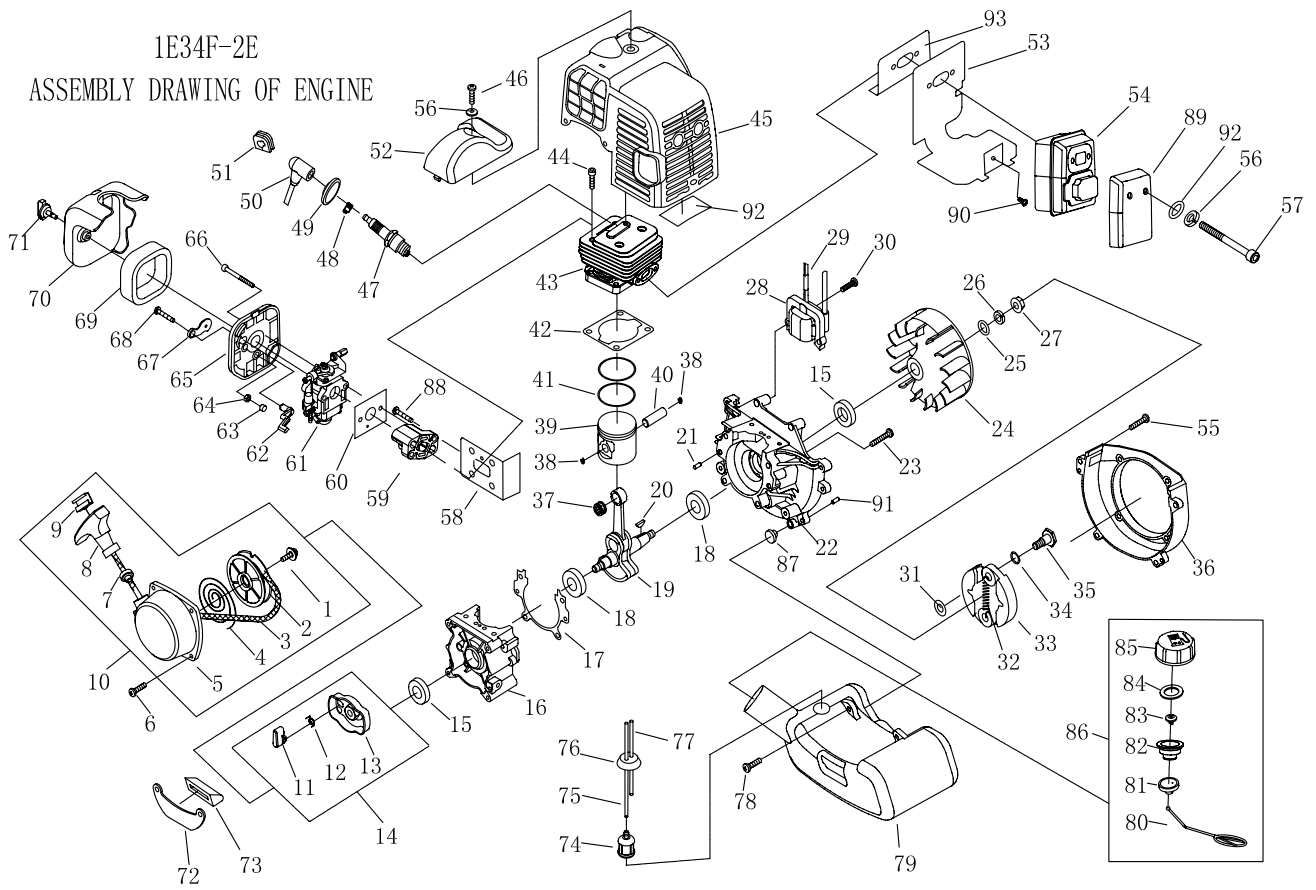


NO.	PART NO.	PART NAME	QTY.
F	CG260-CE. 1	Harness Ass'y	1



NO.	PART NO.	PART NAME	QTY.	NO.	PART NO.	PART NAME	QTY.	NO.	PART NO.	PART NAME	QTY.
1	4GS-50.1-3	Case Cover	1	14	GB/T70+GB93+GB97	Screw M5 × 16	1	27	4GS-50.1-15	Plate	1
2	GB/T70+GB93+GB97	Screw M5 × 20	6	15	GB/T70.1	Screw M5 × 20	1	28	GB/T276	Bearing 619/5-RZ/P6	2
3	GB/T276	Bearing 6000-2RZ/P5	4	16	4GS-50.1.2	Pinion	1	29	4GS-50.1-5	Drive Shaft	1
4	GB894.1	Stop Ring 35	1	17	GB894.1	Stop Ring 10	1	30	4GS-50.1-7	Plate	1
5	GB/T276	Bearing 61807-2RZ/P6	1	18	GB893.2	Stop Ring 26	1	31	GB/T70+GB93+GB97	Screw M5 × 25	1
6	GB/T276	Bearing 619/6-RZ/P6	3	19	4GS-50.1-8	Wheel Box	1	32	GB/T70+GB93+GB97	Screw M5 × 35	2
7	GB894.1	Stop Ring 6	2	20	GB/T6183	Nut M5	5	33	4GS-50.1.3	Pole	8
8	4GS-50.1-6	Shaft	2	21	4GS-50.1-12	Harness	6	34	4GS-50.1-16	Plank	2
9	4GS-50.1-9	Crank Shaft	1	22	4GS-50.1.1	Gatherer	2	35			
10	4GS-50.1-2	Washer	1	23	4GS-50.1-4	Harness	1	36			
11	4GS-50.1-10	Shaft	1	24	4GS-50.1-19	felt	1	37			
12	4GS-50.1-11	Gear	1	25	4GS-50.1-14	Harness φ5	2	38			
13	6MF-30.1-4	Pin	2	26	4GS-50.1-18	Screw	2	39			

1E34F-2E
ASSEMBLY DRAWING OF ENGINE



NO.	Part No.	Part Name	Qty.	NO.	Part No.	Part Name	Qty.	NO.	Part No.	Part Name	Qty.	NO.	Part No.	Part Name	Qty.
1	GB/T9074.6	Screw M5×10	1	25	GB/T859	Washer 8	1	49	1E34F.5-3	Plug Cap	1	73	1E31F-4	Rubber Cover	1
2	1E34F.11-2	Start Rope Reel	1	26	GB/T97.1	Washer 8	1	50	1E34F-E.3-1	Cap	1	74	1E34F.9.2-3A	Cleaner Cover	1
3	1E34F.11-3	Rope	1	27	GB/T6171	Nut M8×1	1	51	1E40F-5.3-1	Plug	1	75	CG420.1.3.2-2	Fuel Pipe 3×1×140	1
4	1E34F.11-1	Recoil Spring	1	28	1E34F-2E.3.2	IGNITION COIL COMP.	1	52	1E34F-E-4	Cover	1	76	EB-415.4.2-2	Plug	1
5	1E34F.11.1	Start Cover Ass'y	1	29	1E36F-2.3.1	Cord Comp.	1	53	1E34F-E-2	Gasket	1	77	EB-415.4.2-4	Fuel Pipe 2.5×1.25×85	1
6	GB70.1+GB93+GB97	Screw M4×16	4	30	GB70.1+GB93+GB97	Screw M5×20	2	54	1E34F-2E.2	Muffler	1	78	GB70.1+GB93+GB96	Screw M5×16	2
7	1E34F.11.1-1	Guide Bushing	1	31	1E34F-11	Washer	2	55	GB70.1+GB93+GB97	Screw M5×16	4	79	1E31FE.8-1	Fuel Tank	1
8	1E36F.1-1	Start Handle	1	32	1E34F.10C-1	Spring	1	56	1E36F-2C-1	Gasket	1	80	1E32FL.6.2-4	Chain	1
9	1E36F.1-5	Resist Gasket	1	33	1E34F.10.1	Expander	2	57	GB70.1+GB97	Screw M5×55-12.9	2	81	1E32FL.6.2-3	End Cover	1
10	1E34F.11G	Starter	1	34	1E34F-13	Spring	2	58	1E34F-E-8	Gasket	1	82	1E32FL.6.2-2	Inside Cover	1
11	1E34F.8-1	Start pole	1	35	1E34F-12	Screw Pin	2	59	1E34F-E.8	Admitting Pipe	1	83	EB-415.4.1.1-1	Inlet	1
12	1E34F.8-2	Spring	1	36	1E31FE-HS-3	Fan Cover	1	60	1E34F-1	Gasket	1	84	CG420.1.3.1-2	Gasket	1
13	1E34F.8.1	Start Reel	1	37	1E31F.4.1	Bearing	1	61	1E34F-2E.1A-CGP	Carburetor	1	85	1E32FL.6.2-1	Fuel Tank Lid	1
14	1E34F.8	Start Reel Ass'y	1	38	1E34F.6-2	Ring	2	62	1E34F.1-2	Choker Handle	1	86	1E32FL.6.2	Lid Ass'y	1
15	1E36F.2	Oil-seal	2	39	1E34F-E.4-1	Piston	1	63	1E34F.1-7	Stop ring	1	87	1E40F-5A-3	Rubber washer	2
16	1E34F-E.6-1	Crank Case	1	40	1E34F.6-3	Piston Pin	1	64	GB/T6170	Nut M4	1	88	GB70.1+GB93+GB97	Screw M5×25	2
17	1E34F-E.6-2	Gasket	1	41	1E34F.6-5	Piston Ring	2	65	1E34F.1.1	Cleaner inside cover	1	89	1E34F-E-7	Cover	1
18	GB/T276	Bearing 6001/P6	2	42	1E34F-E-3	Gasket	1	66	GB70.1+GB97	Screw M5×55	2	90	GB70.1+GB93+GB97	Screw M4×12	1
19	1E34F-E.4.1	Crank Shaft	1	43	1E34F-2E-1	Cylinder	1	67	1E34F.1-3	CHOKER	1	91	GB/T119.1	Pin 4h8×10	2
20	1E40FP-3Z.3-1	Key 3×5×13	1	44	GB/T70.1	Screw M5×18	4	68	GB/T845	Screw ST4.2×12-F-II	1	92	1E36F-E-9	Gasket	0.048
21	GB/T119.1	Pin 4h8×10	2	45	1E34F-E.5	Guide Cover Ass'y	1	69	1E34F.1-1	Filter Net	1	93	HA28-6	Gasket	1
22	1E34F-E.6-3	Crank Case	1	46	GB70.1+GB93+GB97	Screw M5×20	1	70	1E34F.1-4	Cleaner Outside Cover	1				
23	GB70.1+GB93+GB97	Screw M5×25	4	47	L8RTC	Spark Plug	1	71	1E34F.1.2	Screw	1				
24	HA28.2.1.2	MAGNETO ROTOR COMP.	1	48	1E40F-3A.8-2	Spring	1	72	1E34F-E-6	Stand	1				